

**TECHNICAL MANUAL  
ORGANIZATIONAL AND DIRECT SUPPORT  
MAINTENANCE REPAIR PARTS AND SPECIAL  
TOOLS LISTS**

**BUCKET, CLAMSHELL**

**3/4 CU. YD. (ERIE STEEL CO. MODEL X02) NSN 3815-00-378-8682**

**3/4 CU. YD. (BLAW-KNOX MODEL 672) NSN 3815-00-378-8681**

**3/4 CU. YD. (HAISS MODEL ABIHE) NSN 3815-00-378-8684**

**2 CU. YD. (HAISS MODEL ABIKE) NSN 3815-00-378-8700**

**3/4 CU. YD. (ANVIL MODEL GP34S/GP34SZ) NSN 3815-01-108-3082**

**3/4 CU. YD. (OWEN BUCKET MODEL 27-5) NSN 3815-00-239-4884**

**3/4 CU. YD. (OWEN BUCKET MODEL M230) NSN 3815-00-378-8687**

**3/4 CU. YD. (ERIE-STRAYER MODEL GP34G) NSN 3815-00-109-3357**

**AND**

**BUCKET, DRAGLINE**

**3/4 CU. YD. (YAUN MODEL A) NSN 3815-00-641-5865**

**3/4 CU. YD. (ERIE-STRAYER MODEL DLM34G) NSN 3815-00-109-3356**

---

**HEADQUARTERS, DEPARTMENT OF THE ARMY  
11 FEBRUARY 1985**

**ORGANIZATIONAL AND DIRECT SUPPORT  
MAINTENANCE REPAIR PARTS AND SPECIAL  
TOOLS LISTS**

**BUCKET, CLAMSHELL**

3/4 CU. YD. (ERIE STEEL CO. MODEL X02) NSN 3815-00-378-8682  
3/4 CU. YD. (BLAW-KNOX MODEL 672) NSN 3815-00-3788681  
3/4 CU. YD. (HAISS MODEL ABIHE) NSN 3815-00-378-8684  
2 CU. YD. (HAISS MODEL ABIKE) NSN 3815-00-378-8700  
3/4 CU. YD. (ANVIL MODEL GP34S/GP34SZ) NSN 381501-108-3082  
3/4 CU. YD. (OWEN BUCKET MODEL 2-75) NSN 3815-00-239-4884  
3/4 CU. YD. (OWEN BUCKET MODEL M230) NSN 3815-00-3788687  
3/4 CU. YD. (ERIE-STRAYER MODEL GP34G) NSN 3815-00-109-3357

AND

**BUCKET, DRAGLINE**

3/4 CU. YD. (YAUN MODEL A) NSN 3815-00-641-5865  
3/4 CU. YD. (ERIE-STRAYER MODEL DLM34G) NSN 3815-00-109-3356

Current as of 11 June 1984

**REPORTING ERRORS AND RECOMMENDING IMPROVEMENTS**

You can help improve this manual. If you find any mistakes or if you know of a way to improve the procedures, please let us know. Mail your letter, DA Form 2028 (Recommended Changes to Publications and Blank Forms), or DA Form 2028-2 located in back of this manual direct to: U.S. Army Tank-Automotive Command, ATTN: AMSTA-MB, Warren, MI 48090. A reply will be furnished to you.

**TABLE OF CONTENTS**

			<b>Page</b>	<b>Illus. Fig</b>
SECTION	I.	INTRODUCTION .	1	
SECTION	II.	REPAIR PARTS LIST.	7	
GROUP 74		CRANES, SHOVELS, AND EARTH MOVING EQUIPMENT COMPONENTS		
		7411-CRANE DRAGLINE OR CLAMSHELL ATTACHMENTS .....	7	
		CLAMSHELL BUCKET, MODEL X02 .....	7	1
		CLAMSHELL BUCKET, MODEL GP34G.....	11	2

\* This publication supersedes TM5-3815-200-13P dated 22 April 1974 and all changes.

TABLE OF CONTENTS

		Illus.
		Page Fig
	CLAMSHELL BUCKET, MODEL 672.....	13 3
	LEVER ARM PULLEY AND GUARD, MODEL 672.....	17 4
	CLAMSHELL BUCKET, MODEL AB1HE.....	19 5
	CLAMSHELL BUCKET, MODEL AB1KE.....	23 6
	DRAGLINE BUCKET, MODEL A, 3/4 CU. YD.....	27 7
	CLAMSHELL BUCKET, MODEL GP34S/GP34SZ.....	29 8
	DRAGLINE BUCKET, MODEL DLM 34G.....	33 9
	CLAMSHELL BUCKET, MODEL M230.....	35 10
	CLAMSHELL BUCKET COMPONENTS, MODEL M230.....	39 11
	CLAMSHELL BUCKET, MODEL 2-75.....	41 12
GROUP 95	GENERAL USE STANDARDIZED PARTS	
	9501-BULK MATERIEL.....	43
	BULK MATERIEL.....	43 BULK
SECTION III.	SPECIAL TOOLS LIST (NOT APPLICABLE)	
SECTION IV.	NATIONAL STOCK NUMBER AND. PART NUMBER INDEX	45

**ORGANIZATIONAL AND DIRECT SUPPORT MAINTENANCE  
REPAIR PARTS AND SPECIAL TOOLS LISTS**

**SECTION I. INTRODUCTION**

1. Scope.

This manual lists and authorizes spares and repair parts; special tools; special Test, Measurement, and Diagnostic Equipment (TMDE); and other special support equipment required for performance of organizational and direct support maintenance of the Bucket, Clamshell; Bucket, Dragline. It authorizes the requisitioning, issue, and disposition of spares, repair parts and special tools as indicated by the Source, Maintenance and Recoverability (SMR) codes. and disposition instructions, as shown in the following

(1) ((a) FIG NO.) Figure Number. Indicates the figure number illustrating an exploded view of a functional group.

(2) ((b) ITEM NO.). Indicates the number used to identify items called out in the illustration.

b. SMR CODE (Column (2)). The Source, Maintenance, and Recoverability (SMR) code is a 5-position code containing supply/requisitioning information, maintenance category authorization criteria, breakout:

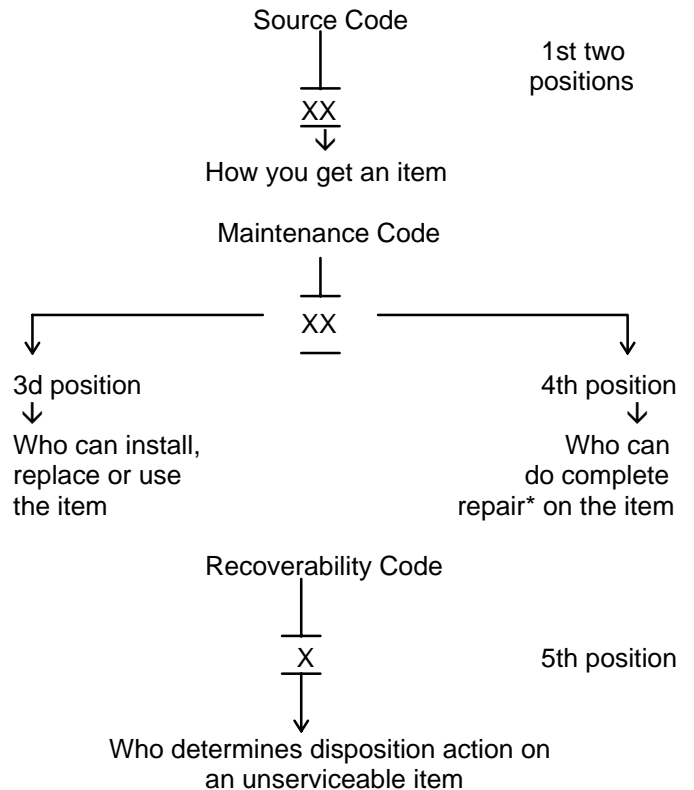
2. General.

This Repair Parts and Special Tools List is divided into the following sections:

a. Section II. Repair Parts List. A list of spares and repair parts authorized by this RPSTL for use in the performance of maintenance. The list also includes parts which must be removed for replacement of the authorized parts. Parts lists are composed of functional groups in ascending alphanumeric sequence, with the parts in each group listed in ascending figure and item number sequence. Bulk materials are listed in NSN sequence.

b. Section III. Special Tools List. A list of special tools, special TMDE, and other special support equipment authorized by this RPSTL for the performance of maintenance.

c. Section IV. National Stock Number and Part Number Index. A list, in National Item Identification Number (NIIN) sequence, of all National Stock Numbers (NSN) appearing in the listings, followed by a list in alphanumeric sequence of all part numbers appearing in the listings. National stock numbers and part numbers are cross-referenced to each illustration figure and item number appearance.



\*Complete Repair: Maintenance capacity, capability, and authority to perform all the corrective maintenance tasks of the "Repair" function in a use/user environment in order to restore serviceability to a failed item.

3. Explanation of Columns.

a. Illustration (Column (1)). This column is divided as follows:

(1) Source Code. The source code tells you how you get an item needed for maintenance, repair, or overhaul of an end item/equipment. Source codes are always the first two positions of the SMR code. Explanations of source codes follow:

Code	Explanation
PA	Stocked items; use the applicable NSN
PB	to request/requisition items with these
PC	source codes. They are authorized to
PD	the category indicated by the code en-
PE	tered in the 3d position of the SMR code.
PF	
PG	
	Items with these codes are not to be
	requested/requisitioned individually.
KF	They are part of a kit which is authorized
KB	to the maintenance category indicated
	in the 3d position of the SMR code. The
	complete kit must be requisitioned and
	applied.
	Items with these codes are not
	to be requested/requisitioned
	individually. They must be
	made from bulk material which
	is identified by NSN in the
	description column and listed
	in the Bulk Material group in the
	repair parts list in this manual.
	If the item is authorized to you
	by the 3d position code of the
	SMR code, but the source
	code indicates it is made at a
	higher category, order the item
	from the higher category of
	maintenance.
MO-(Made at	
Org	
Category)	
MF-(Made at	
DS	
Category)	
AO-(Assembled	Items with these codes are not
by Org	to be requested/requisitioned
Category)	individually. The parts that
AF- (Assembled	make up the assembled item
by DS	must be requisitioned or fa-
Category)	bricated and assembled at the

category of maintenance indicated by the source code. If the 3d position code of the SMR code authorizes you to replace the item, but the source code indicates the item is assembled at a higher category, order the item from the higher category of maintenance.

- XADo not requisition an "XA"-coded item. Order its next higher assembly. (Also, refer to the NOTE below.)
- XBIf an "XB" item is not available from salvage, order it using the FSCM and part number given.
- XC Installation drawing, diagram, instruction sheet, field service drawing, that is identified by manufacturer's part number. Not applicable.
- XD Item is not stocked. Order an "XD"-coded item through normal supply channels using the FSCM and part number given, if no NSN is available.

NOTE: Cannibalization or controlled exchange, when authorized, may be used as a source of supply for items with the above source codes, except for those source coded "XA".

(2) Maintenance Code. Maintenance codes tell you the category(s) of maintenance authorized to USE and REPAIR support items. The maintenance codes are entered in the third and fourth positions of the SMR Code as follows:

(a) The maintenance code entered in the third position tells you the lowest maintenance category authorized to remove, replace, and use an item. The maintenance code entered in the third position will indicate authorization to one of the following categories of maintenance.

Code	Application/Explanation	Recoverability Codes	Definition
C	-Crew or operator maintenance done within organizational maintenance.	Z	-Nonreparable item. When unserviceable, condemn and dispose of the item at the category of maintenance shown in 3d position of SMR code.
O	-Organizational category can remove, replace, and use the item.	O	-Reparable item. When uneconomically repairable, condemn and dispose of the item at organizational category.
F	-Direct support category can remove, replace, and use the item.	F	-Reparable item. When uneconomically repairable, condemn and dispose of the item at the direct support category.
L	-Specialized repair activity can remove, replace, and use the item.	L	-Reparable item. Condemnation and disposal not authorized below specialized repair activity.
		A	-Item requires special handling or condemnation procedures because of specific reasons (i.e., precious metal content, high dollar value, critical material or hazardous material). Refer to appropriate manuals/directives for specific instructions.

(b) The maintenance code entered in the fourth position tells you whether or not the item is to be repaired and identifies the lowest maintenance category with the capability to do complete repair (i.e., perform all authorized repair functions). (NOTE: Some limited repair may be done on the item at a lower category of maintenance, if authorized by the Maintenance Allocation Chart (MAC) and SMR codes.) This position will contain one of the following maintenance codes.

Code	Application/Explanation
O	-Organizational is the lowest category that can do complete repair of the item.
F	-Direct support is the lowest category that can do complete repair of the item.
L	-Specialized repair activity is the lowest category that can do complete repair of the item.
Z	-Nonreparable. No repair is authorized.
B	-No repair is authorized. (No parts or special tools are authorized for the maintenance of a "B" coded item.) However, the item may be reconditioned by adjusting, lubricating, etc., at the user level.

(3) Recoverability Code. Recoverability codes are assigned to items to indicate the disposition action on unserviceable items. The recoverability code is entered in the fifth position of the SMR code as follows:

- c. NATIONAL STOCK NUMBER (Column (3)). Lists the National Stock Number (NSN) assigned to the item. Use the NSN for requests/requisitions.
- d. FSCM (Column (4)). The Federal Supply Code for Manufacturer (FSCM) is a 5-digit numeric code which is used to identify the manufacturer, distributor, or Government agency, etc., that supplies the item.
- e. PART NUMBER (Column (5)). Indicates the primary number used by the manufacturer (individual, company, firm, corporation, or Government activity), which controls the design and characteristic of the item by means of its engineering drawings, specifications standards, and inspection requirements to identify an item or range of items.

NOTE: When you use an NSN to requisition an item, the item you receive may have a different part number from the part ordered, but go ahead and use or furnish it as the replacement part.

f. DESCRIPTION (Column (6)). This column includes the following information:

(1) The Federal item name and, when required, a minimum description to identify the item.

(2) The physical security classification. Not applicable.

(3) Items that are included in kits and sets are listed below the name of the kit or set

(4) Spare/repair parts that make up an assembled item are listed immediately following the assembled item line entry. If the first item of a figure is indented, the assembly appears as the last item in the previous figure.

(5) NSN's for bulk materials are referenced in the description column in the line item entry for the item to be manufactured/fabricated.

(6) When the part to be used differs between serial numbers of the same model, the effective serial numbers are shown as the last line of the description.

(7) The USABLE ON CODE. When applicable (see paragraph 4, Special Information).

(8) In the Special Tools List section, the Basis Of Issue (BOI) appears as the last line(s) in the entry for each special tool, special TMDE, and other special support equipment. When density of equipments supported exceeds density spread indicated in the basis of issue, the total authorization is increased proportionately.

g. U/M (Column (7)). The Unit of Measure (U/M) indicates the measure (e.g., foot, gallon, pound) or count (e.g., each, dozen, gross) of a listed item. A two-character alpha code (e.g., FT, GL, LB, EA, DZ, GR) appears in this column to indicate the measure or count. If the U/M code appearing in this column differs from the Unit of Issue (U/I) code listed in the Army Master Data File (AMDF), request the lowest U/I that will satisfy your needs.

h. QTY INC IN UNIT (Column (8)). The Quantity Incorporated in Unit (QTY INC IN UNIT) indicates the

quantity of the item used in the breakout shown on the illustration figure, which is prepared for a functional group, subfunctional group, or an assembly. A "V" appearing in this column in lieu of a quantity indicates that no specific quantity is applicable (e.g., shims, spacers).

4. SPECIAL INFORMATION.

a. The "USABLE ON CODE" title appears in the lower right corner of column (6), Description. Usable on codes are shown in the right-hand margin of the description column. Uncoded items are applicable to all models. Identification of the usable on codes used in this publication are:

<u>Code</u>	<u>Used On</u>
T58	Model X02
T61	Model 672
V51	Model AB1 HE
T67	Model AB1KE
T69	Model A, 3/4 Cu. Yd.
BKT	Model GP34S/GP34SZ
BK3	Model 2- 75
BK2	Model M230
BK1	Model GP34G
BKD	Model DLM 34G

b. Bulk materials required to manufacture items are listed in the Bulk Material Group of this manual. NSN's for bulk materials are also referenced in the description column of the line item entry for the item to be manufactured/fabricated. Detailed manufacturing instructions for items source coded to be manufactured or fabricated are found in TM5-3815-200-23.

c. Detailed assembly instructions for items source coded to be assembled from component spare/repair parts are found in TM5-3815-200-23. Items that make up the assembly are listed immediately following the assembled item entry.

d. Line item entries for repair parts kits and sets appear as the last entries in the repair parts listing for the figure in which their parts are listed as repair parts.

e. Items which have the word BULK in the figure number column will have an index number shown in the item number column. This index number is furnished for use as a cross-reference between the National Stock Number/Part Number Index and the Bulk Material List in Section II.

f. The following publications pertain to the Bucket, Clamshell; Bucket, Dragline, and its components:

TM5-3815-200-23  
 Bucket, Clamshell; Bucket, Dragline

5. How to Locate Repair Parts.

a. When National Stock Number or Part Number is Not Known:

(1) First. Using the table of contents, determine the functional group to which the item belongs. This is necessary since figures are prepared for functional groups, and listings are divided into the same groups.

(2) Second. Find the figure covering the functional group to which the item belongs.

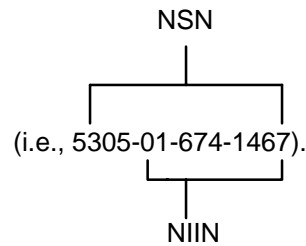
(3) Third. Identify the item on the figure and note the item number of the item.

(4) Fourth. Refer to the Repair Parts List for the figure to find the line item entry for the item number noted on the figure.

b. When National Stock Number or Part Number is Known:

(1) First. Using the Index of National Stock Numbers and Part Numbers, find the pertinent national stock number or part number. The NSN index is in National Item Identification Number (NIIN)\* sequence. The part numbers in the Part Number Index are listed in ascending alphanumeric sequence. Both indexes cross-reference you to the illustration figure and item number of the item you are looking for.

\*The NIIN consists of the last 9 digits of the NSN

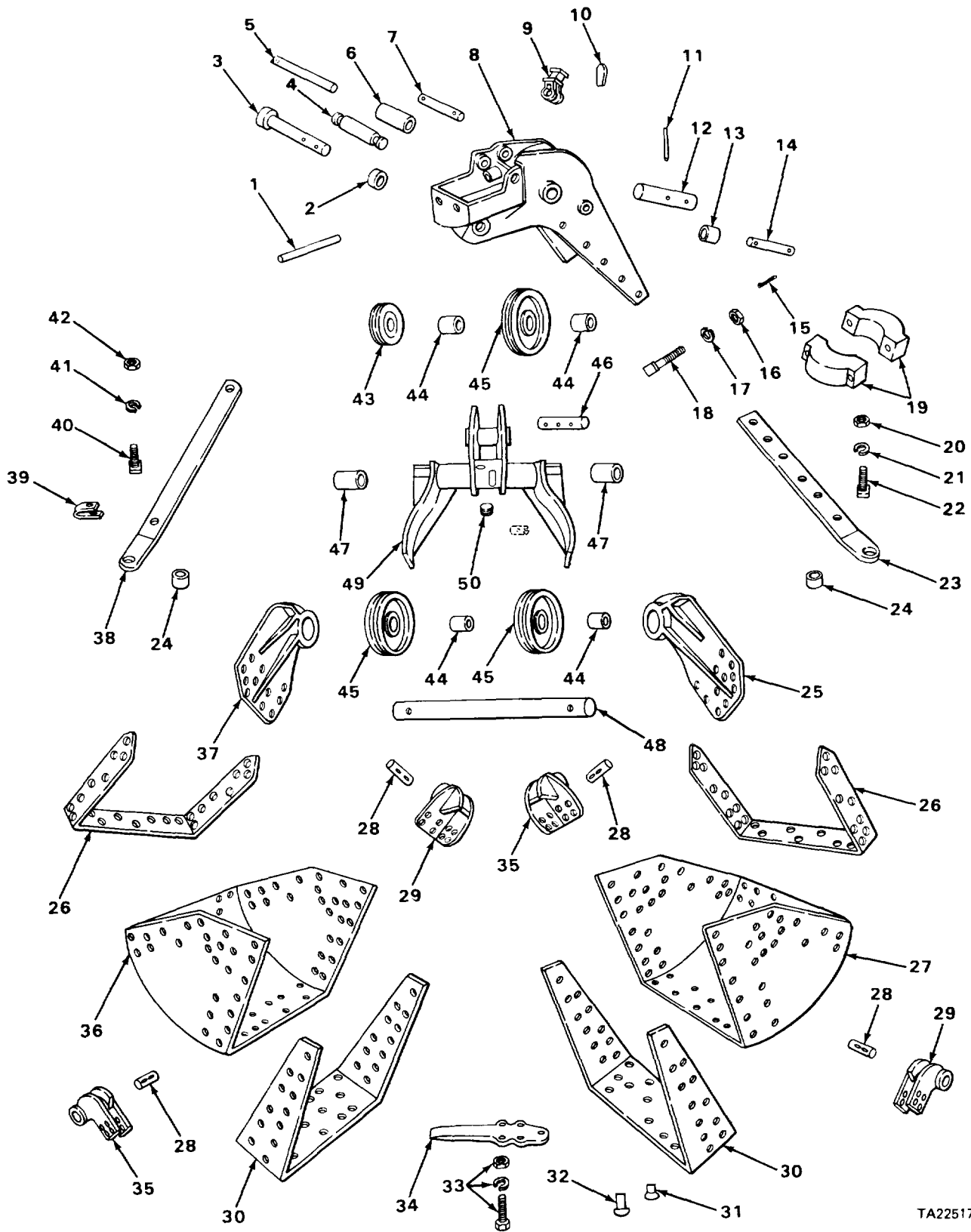


(2) Second. After finding the figure and item number, verify that the item is the one you're looking for, then locate the item number in the repair parts list for the figure.

6. Abbreviations.

For standard abbreviations see MIL-STD-12D, Military Standard Abbreviations For Use On Drawing, Specifications, Standards And In Technical Documents.





TA225176

FIGURE 1. CLAMSHELL BUCKET, MODEL X02.

REPAIR PARTS LIST

(1) ILLUSTRATION		(2)	(3)	(4)	(5)	(6)	(7)	(8)
(a) FIG NO.	(b) ITEM NO.	SMR CODE	NATIONAL STOCK NUMBER	FSCM	PART NUMBER	DESCRIPTION  USABLE ON CODE	U/M	QTY INC IN UNIT
						GROUP 74-CRANES, SHOVELS, AND EARTH MOVING EQUIPMENT COMPONENTS GROUP 7411-CRANE DRAGLINE OR CLAMSHELL ATTACHMENTS		
1	1	XDOZZ		20874	28	PIN, STRAIGHT, HEADLE ROLLER HEAD, LOWER.. T58	EA	2
1	2	XBOZZ		20874	X02-18	COLLAR, SHAFT GUIDE SHEAVE PIN ..... T58	EA	1
1	3	XBOZZ		20874	X02-22	PIN, STRAIGHT, HEADED GUIDE SHEAVE ..... T58	EA	1
1	4	XBOZZ		20874	X02-45	GUARD WIRE ROPE ..... T58	EA	1
1	5	XBOZZ		20874	X02-27	PIN, STRAIGHT, HEADLE ROLLER HEAD, UPPER .. T58	EA	1
1	6	XDOZZ		20874	X02-15	ROLLER, ROPE GUARD UPPER AND LOWER ..... T58	EA	3
1	7	XBOZZ		20874	X02-26	PIN, STRAIGHT, HEADLE HOLD LINE ..... T58	EA	1
1	8	XBFZZ		20874	X02-8	HEAD CLAMSHELL BUCKET ..... T58	EA	1
1	9	PFOZZ	4030-00-354-3093	81076	B12569-2	SOCKET CABLE HOLDING ..... T58	EA	2
1	10	XDOZZ		20874	X02-58	WEDGE CABLE HOLDING SOCKET ..... T58	EA	2
1	11	XBOZZ		20874	X02-47	PIN, STRAIGHT, HEADLE HEAD SHEAVE, PIN LOCK T58	EA	
10								
1	12	XBOZZ		20874	X02-19	SHAFT HEAD SHEAVE..... T58	EA	1
1	13	XBOZZ		20874	X02-52	SPACER SOCKET DEAD END ..... T58	EA	1
1	14	PFOZZ	5315-00-352-6156	20874	X02-25	PIN, STRAIGHT, HEADLE DEAD END ..... T58	EA	1
1	15	PFOZZ	5315-00-189-9595	96906	MS24665-749	PIN, COTTER DEAD END PIN ..... T58	EA	8
1	16	PFFZZ	5310-00-763-8921	96906	MS51967-23	NUT, PLAIN, HEXAGON ..... T58	EA	4
1	17	PFFZZ	5310-00-584-7888	96906	MS35338-51	WASHER, LOCK ..... T58	EA	4
1	18	PFFZZ	5306-00-959-7820	96906	MS35355-207	BOLT, MACHIE SQUARE HEAD..... T58	EA	4
1	19	XBOZZ		20874	X02-50	COUNTERWEIGHT..... T58	EA	2
1	20	PAFZZ	5310-00-880-8186	96906	MS51967-26	NUT, PLAIN, HEXAGON ..... T58	EA	10
1	21	PAFZZ	5310-00-754-2005	96906	MS35338-52	WASHER, LOCK ..... T58	EA	10
1	22	PFFZZ		96906	MS35355-234	BOLT, MACHINE SQUARE HEAD ..... T58	EA	10
1	23	XBOZZ		20874	X02-14	BAR CLAMSHELL, SINGLE END..... T58	EA	2
1	24	PFOZZ	3120-00-352-6161	20874	X02-32	BEARING, SLEEVE CLOSING BAR..... T58	EA	4
1	25	XBOZZ		20874	X02-2	HINGE CLAMSHELL BUCKET RH..... T58	EA	1
1	26	XBOZZ		20874	X02-36	STRAP, BUCKET BACK..... T58	EA	2
1	27	XBOZZ		20874	X02-7	BUCKET, SCOOP A..... T58	EA	1

(1) ILLUSTRATION		(2)	(3)	(4)	(5)	(6) DESCRIPTION	(7)	(8)
(a) FIG NO.	(b) ITEM NO.	SMR CODE	NATIONAL STOCK NUMBER	FSCM	PART NUMBER	USABLE ON CODE	U/M	QTY INC IN UNIT
7411 (CONT)								
1	28	XDOZZ		20874	24	PIN, STRAIGHT, HEADLE CORNER BRACKET..... T58	EA	4
1	29	XBOZZ		20874	X02-4	BRACKET, CORNER CLAMSHELL BUCKET RH..... T58	EA	2
1	30	XBOZZ		20874	X02-41	CUTTING EDGE, BUCKET..... T58	EA	2
1	31	XDOZZ		20874	X02-49	RIVET, SOLID CUTTING EDGE, SCOOP, COUNTERSUNK HEAD..... T58	EA	50
1	32	XDOZZ		20874	X02-48	RIVET, SOLID CUTTING EDGE, SCOOP, BUTTON HEAD..... T58	EA	98
1	33	PFOZZ	5306-00-352-6166	20874	X02-44	BOLT SET BUCKET TOOTH..... T58	EA	6
1	34	PBOZZ	3815-00-507-6275	20874	X02-43	TOOTH, BUCKET..... T58	EA	6
1	35	XBOZZ		20874	X02-5	BRACKET, CORNER CLAMSHELL BUCKET, LH..... T58	EA	2
1	36	XBOZZ		20874	X02-38	BUCKET, SCOOP..... T58	EA	2
1	37	XBOZZ		20874	X02-3	HINGE CLAMSHELL BUCKET, LH..... T58	EA	1
1	38	XBOZZ		20874	X02-13	BAR CORNER, BRACKET TO HEAD..... T58	EA	2
1	39	XBOZZ		20874	X02-39	CLIP, TAGLINE CORNER BAR..... T58	EA	2
1	40	PFOZZ	5306-00-964-0963	96906	MS35355-163	BOLT, MACHINE SQUARE HEAD..... T58	EA	2
1	41	PFOZZ	5310-00-820-6653	96906	MS35338-50	WASHER, LOCK..... T58	EA	2
1	42	PFOZZ	5310-00-763-8905	96906	M51967-20	NUT, PLAN, HEXAGON..... T58	EA	2
1	43	PFOZZ	3020-00-352-6147	20874	X02-12	PULLEY, GROOVE BUCKET CLOSING GUIDE..... T58	EA	2
1	44	PFOZZ	3120-00-352-6162	20874	X02-34	BEARING, SLEEVE HEAD PULLEY..... T58	EA	4
1	45	XBOZZ	20874 X02-11			PULLEY, GROOVE HEAD CLOSING..... T58	EA	3
1	46	PFOZZ	5315-00-352-6152	20874	X02-21	PIN, STRAIGHT, HEADLE LEVER ARM, SHEAVE..... T58	EA	1
1	47	PFOZZ	3120-00-352-6160	20874	X02-31	BEARING, SLEEVE LEVER ARM..... T58	EA	2
1	48	XBOZZ		20874	23	SHAFT MAIN HINGE..... T58	EA	1
1	49	XBOZZ		20874	X02-1	ARM, LEVER CLAMSHELL BUCKET..... T58	EA	1
1	50	PAOZZ	4730-00-834-6189	63686	1132	PLUG, PIPE..... LEVER ARM, CAST IRON, SQUARE HEAD..... T58	EA	1
<b>8/(9 blank)</b>								

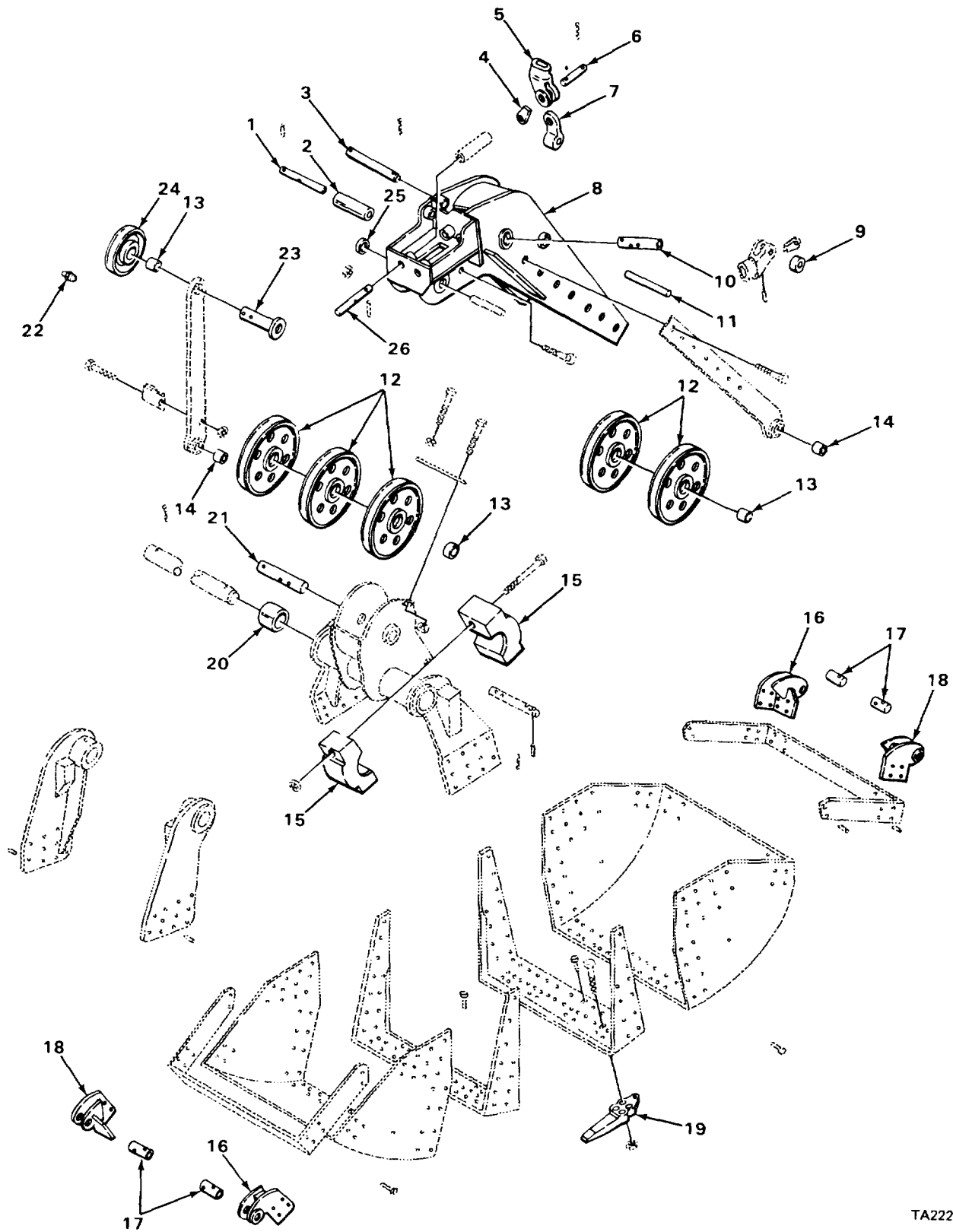
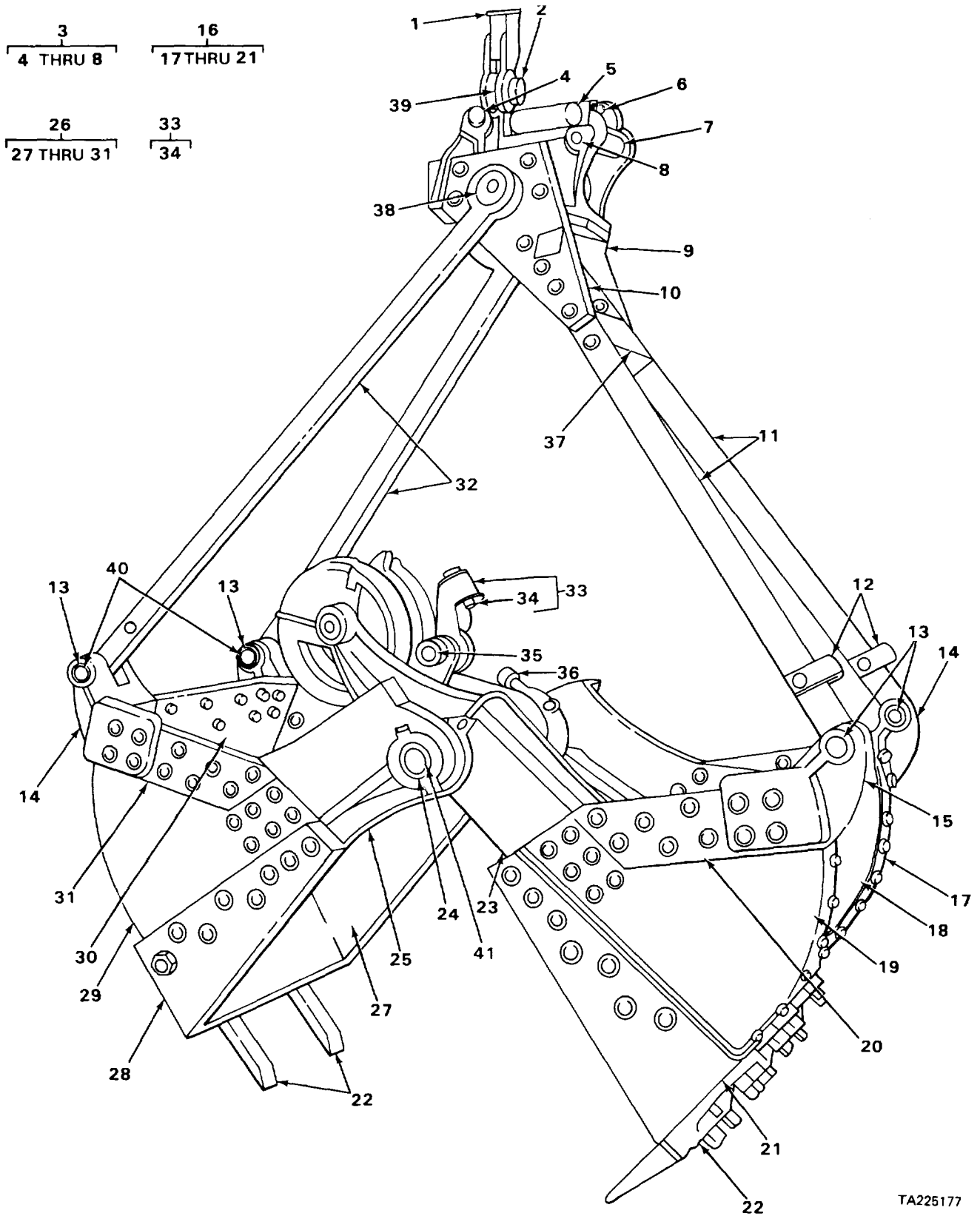


FIGURE 2. CLAMSHELL BUCKET, MODEL GP34G.

TA222467

(1) ILLUSTRATION		(2)	(3)	(4)	(5)	(6) DESCRIPTION	(7)	(8)
(a) FIG NO.	(b) ITEM NO.	SMR CODE	NATIONAL STOCK NUMBER	FSCM	PART NUMBER	USABLE ON CODE	U/M	QTY INC IN UNIT
						7411 (CONT)		
2	1	XDOZZ		20874	15224	PIN UPPER ROLLER..... BK1	EA	1
2	2	XDOZZ		20874	11402	ROLLER UPPER AND LOWER..... BK1	EA	2
2	3	XDOZZ		20874	15219	PIN HOLD LINE..... BK1	EA	1
2	4	PAOZZ	4030-01-159-1566	20874	11942	WEDGE, WIRE ROPE SOC HOLDING SOCKET ..... BK1	EA	2
2	5	PAOZZ	5340-01-160-4675	20874	11517	CLEVIS, ROD END HOLDING CABLE..... BK1	EA	2
2	6	PAOZZ	5315-01-159-9437	20874	15221	PIN, STRAIGHT, HEADLE ..... BK1	EA	1
2	7	PAOZZ	3815-01-158-1759	20874	23954	PLATE, TOGGLE ..... BK1	EA	1
2	8	XDOZZ		20874	15441	HEAD..... BK1	EA	1
2	9	XDOZZ		20874	15265	SPACER DEAD END..... BK1	EA	1
2	10	PAOZZ	5315-01-160-4643	20874	19508	PIN, STRAIGHT, HEADLE HEAD SHEAVE ..... BK1	EA	1
2	11	XDOZZ		20874	15223	PIN DEAD END ..... BK1	EA	1
2	12	XDOZZ		20874	15179	SHEAVE CLOSING ..... BK1	EA	5
2	13	XDOZZ		20874	15284	BUSHING HEAD AND LEVER ARM SHEAVE ..... BK1	EA	3
2	14	XDOZZ		20874	15227	BUSHING CORNER BAR..... BK1	EA	4
2	15	XDOZZ		20874	11955	COUNTER WEIGHT..... BK1	EA	4
2	16	XDOZZ		20874	15467	BRACKET, CORNER LEFT HAND..... BK1	EA	2
2	17	XDOZZ		20874	15229	PIN CORNER BRACKET..... BK1	EA	4
2	18	XDOZZ		20874	19190	BRACKET CORNER RIGHT HAND..... BK1	EA	2
2	19	XDOZZ		20874	11697	TEETH, DIGGING ..... BK1	EA	6
2	20	XDOZZ		20874	15158	BUSHING LEVER ARM..... BK1	EA	1
2	21	XDOZZ		20874	20752	PIN LOWER ARM..... BK1	EA	1
2	22	PAOZZ	4730-00-050-4208	96906	M15003-1	FITTING, LUBRICATION ..... BK1	EA	6
2	23	XDOZZ		20874	15226	PIN GUIDE SHEAVE ..... BK1	EA	1
2	24	PAOZZ	3020-01-159-1010	20874	19969	PULLEY, GROOVE ..... BK1	EA	1
2	25	XDOZZ		20874	15321	COLLAR, SHEAVE ..... BK1	EA	1
2	26	XDOZZ		20874	15225	PIN LOWER ROLLER ..... BK1	EA	2



TA225177

FIGURE 3. CLAMSHELL BUCKET, MODEL 672.

SECTION II

TM 5-3815-200-23P

(1) ILLUSTRATION		(2) SMR CODE	(3) NATIONAL STOCK NUMBER	(4) FSCM	(5) PART NUMBER	(6) DESCRIPTION  USABLE ON CODE	(7) U/M	(8) QTY INC IN UNIT
(a) FIG NO.	(b) ITEM NO.							
7411(CONT)								
3	1	XBOZZ		88902	15071	SOCKET, WIRE ROPE HOLD LINE ..... T61	EA	1
3	2	XBOZZ		88902	15066	PIN, STRAIGHT, HEADLE .....HOLD LINE SOCKET, W KEEPER PIN..... T61	EA	1
3	3	XBOOO		70945	672-3	HEAD BLOCK ASSEMBLY CLAMSHELL BUCKET, W/RIVETS ..... T61	EA	1
3	4	XBOZZ		88902	15063	.PIN, STRAIGHT, HEADLE HOLD OOWN, W/KEEPER PIN ..... T61	EA	1
3	5	XBOZZ		88902	15068	.ROLLER, CABLE GUIDE, UPPER ..... T61	EA	2
3	6	XBOZZ		88902	15064	.SHAFT, GUIDE ROLLER UPPER, W./GREASE FITTINGS AND KEEPER PINS ..... T61	EA	1
3	7	XBOZZ		88902	15069	.ROLLER, CABLE GUIDE, LOWER ..... T61	EA	1
3	8	XOOZZ		88902	15065	.SHAFT, GUIDE ROLLER LOWER, W/GREASE FITTINGS AND KEEPER PINS ..... T61	EA	1
3	9	XBFZZ		70945	672-91	PLATE, HEAD A SCOOP, RH W/RIVETS AND NAME PLATE ..... T61	EA	1
3	10	XBFZZ		70945	672-90	PLATE, HEAD A SCOOP, LH, W/RIVETS AND NAMEPLATE ..... T61	EA	1
3	11	XBFZZ		70945	672-36	BAR, CORNER W, /RIVETS..... T61	EA	2
3	12	XBOZZ		88902	15081	CLIP CORNER BAR, TAGLINE W/BOLT ..... T61	EA	2
3	13	XDFZZ		88902	15062	SHAFT, CORNER BAR W/KEEPER PN AND GREASE FITTINGS ..... T61	EA	4
3	14	XBFZZ		70945	672-11	BRACKET, CORNER A SCOOP, RH, B SCOOP, LH, W/RIVETS AND KEEPER PIN ..... T61	EA	2
3	15	XBFZZ		70945	672-10	BRACKET, CORNER A SCOOP, LH, B SCOOP, RH, W/RIVETS AND KEEPER PIN ..... T61	EA	2
3	16	XBFFF		70945	672-40	SCOOP ASSEMBLY CLAMSHELL BUCKET, A ..... T61	EA	1
3	17	XBFZZ		70945	672-43	.PLATE, SIDE RH, W/RIVETS..... T61	EA	1
3	18	XBFZZ		70945	672-42	PLATE, BACK A SCOOP, W/RIVETS ..... T61	EA	1
3	19	XBFZZ		70945	672-44	.PLATE, SIDE LH, W/RIVETS ..... T61	EA	1
3	20	XBFZZ		70945	672-46	.BAND, BACK A SCOOP, W/RIVETS..... T61	EA	1
3	21	XBFZZ		70945	672-41	.LIP, CLAMSHELL BUCKE A SCOOP, W/RIVETS..... T61	EA	1
3	22	XDOZZ		88902	15098	POINT, TOOTH W/BOLTS, NUTS AND LOCK WASHERS ..... T61	EA	5
3	23	XBFZZ		70945	672-1	ARM, LEVER SCOOP HINGE ..... T61	EA	1
3	24	XBFZZ		88902	15061	PIN, HINE W/GREASE FITTINGS AND KEEPER PINS ..... T61	EA	1
3	25	XBFZZ		70945	672-9	HINGE, CLAMSHELL BUC B SCOOP, LH, W/RIVETS AND KEEPER PIN ..... T61	EA	1
3	26	XBFFF		70945	672-70	SCOOP ASSEMBLY CLAMSHELL BUCKET, B, W/RIVETS ..... T61	EA	1

SECTION II

TM 5-3815-200-23P

(1) ILLUSTRATION		(2)	(3)	(4)	(5)	(6)	(7)	(8)
(a) FIG NO.	(b) ITEM NO.	SMR CODE	NATIONAL STOCK NUMBER	FSCM	PART NUMBER	DESCRIPTION  USABLE ON CODE	U/M	QTY INC IN UNIT
						7411 (CONT)		
3	27	XBFZZ		70945	672-74	.PLATE SIDE RH, W/RIVETS..... T61	EA	1
3	28	XBFZZ		88902	15093	.LIP, SCOOP B, W/RIVETS..... T61	EA	1
3	29	XBFZZ		70945	672-73	.PLATE, SIDE LH, W/RIVETS..... T61	EA	1
3	30	XBFZZ		70945	672-72	.PLATE, BACK B SCOOP, W/RIVETS..... T61	EA	1
3	31	XBFZZ		70945	672-77	.BAND, BACK B SCOOP, W/RIVETS..... T61	EA	1
3	32	XBFZZ		70945	672-37	BAR, CORNER W/KEEPER PIN..... T61	EA	2
3	33	XBOOO		88902	15072	SOCKET, WIRE ROPE DEAD END, 3 OR PART..... T61	EA	1
3	34	XDOZZ		88902	15073	.WEDGE, WIRE ROPE SOC..... T61	EA	1
3	35	XBOZZ		88902	15067	PIN, STRAIGHT, HEADLE 3 OR 5 PART DEAD END, W/KEEPER PIN..... T61	EA	1
3	36	XBOZZ		70945	672-8	HINGE, CLAMSHELL BUC B SCOOP, RH, W/RIVETS AND KEEPER PIN..... T61	EA	1
3	37	XBFZZ		70945	672-92	BRACE, CORNER BAR W/RIVETS..... T61	EA	1
3	38	XBFZZ		88902	15060	PIN, HEAD BLOCK W/KEEPER PINS AND GREASE FITTINGS..... T61	EA	1
3	39	XBOZZ		88902	15070	KNUCKLE, HOLD LINE W/GREASE FITTING..... T61	EA	1
3	40	XDOZZ		88902	15058	BUSHING, CORNER BAR..... T61	EA	4
3	41	XDOZZ		88902	15059	BUSHING, LEVER ARM..... T61	EA	2
<b>14/(15 blank)</b>								



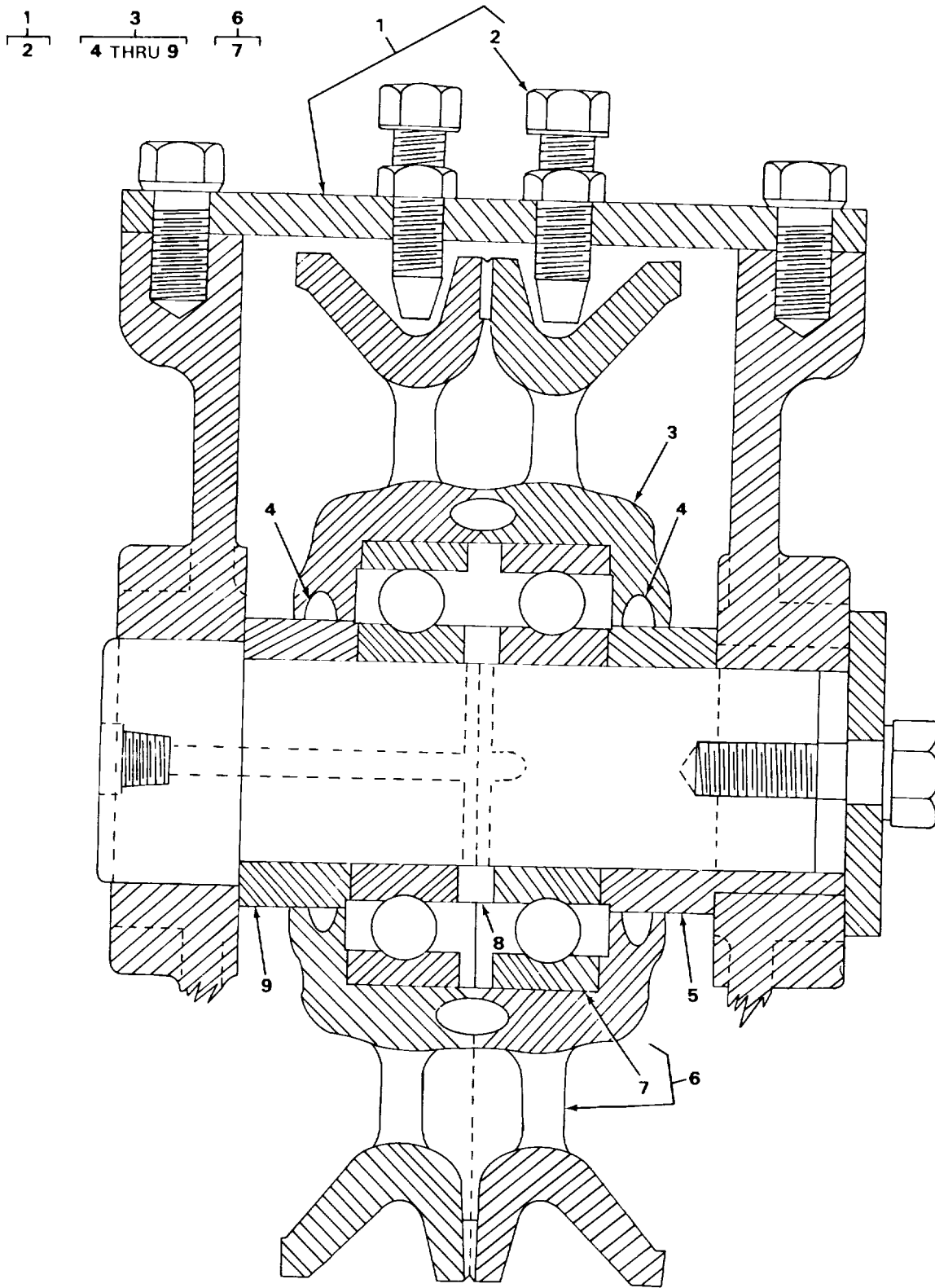


FIGURE 4. LEVER ARM PULLEY AND GUARD, MODEL 672.

TA225178

SECTION II

TM 5-3815-200-23P

(1) ILLUSTRATION		(2)	(3)	(4)	(5)	(6)	(7)	(8)
(a) FIG NO.	(b) ITEM NO.	SMR CODE	NATIONAL STOCK NUMBER	FSCM	PART NUMBER	DESCRIPTION  USABLE ON CODE	U/M	QTY INC IN UNIT
						7411 (CONT)		
4	1	XB000	3815-00-505-5090	88902	15085	GUARD, PULLEY ..... T61	EA	1
4	2	XB0ZZ		70945	672-51	.PLOW PULLEY ..... T61	EA	2
4	3	PF0FF		70945	672-50	PULLEY ASSEMBLY, GRO..... T61	EA	1
4	4	X00ZZ		88902	15087	.PACKING MATERIAL..... T61	EA	1
4	5	XD0ZZ		70945	672-551	.RING, SAND SEAL, LEVE LONG..... T61	EA	2
4	6	XBFFF		70945	672-53	.PULLEY,GROOVE LEVER ARM..... T61	EA	2
4	7	XBFZZ		24076	57	.BEARING, BALL, ANNULA LEVER ARM PULLEY..... T61	EA	2
4	8	XB0ZZ		88902	15091	.SPACER, BEARING..... T61	EA	2
4	9	XB0ZZ		70945	672-55	.RING, SAND SEAL, LEVE SHORT ..... T61	EA	2
17								

11 20  
12 21

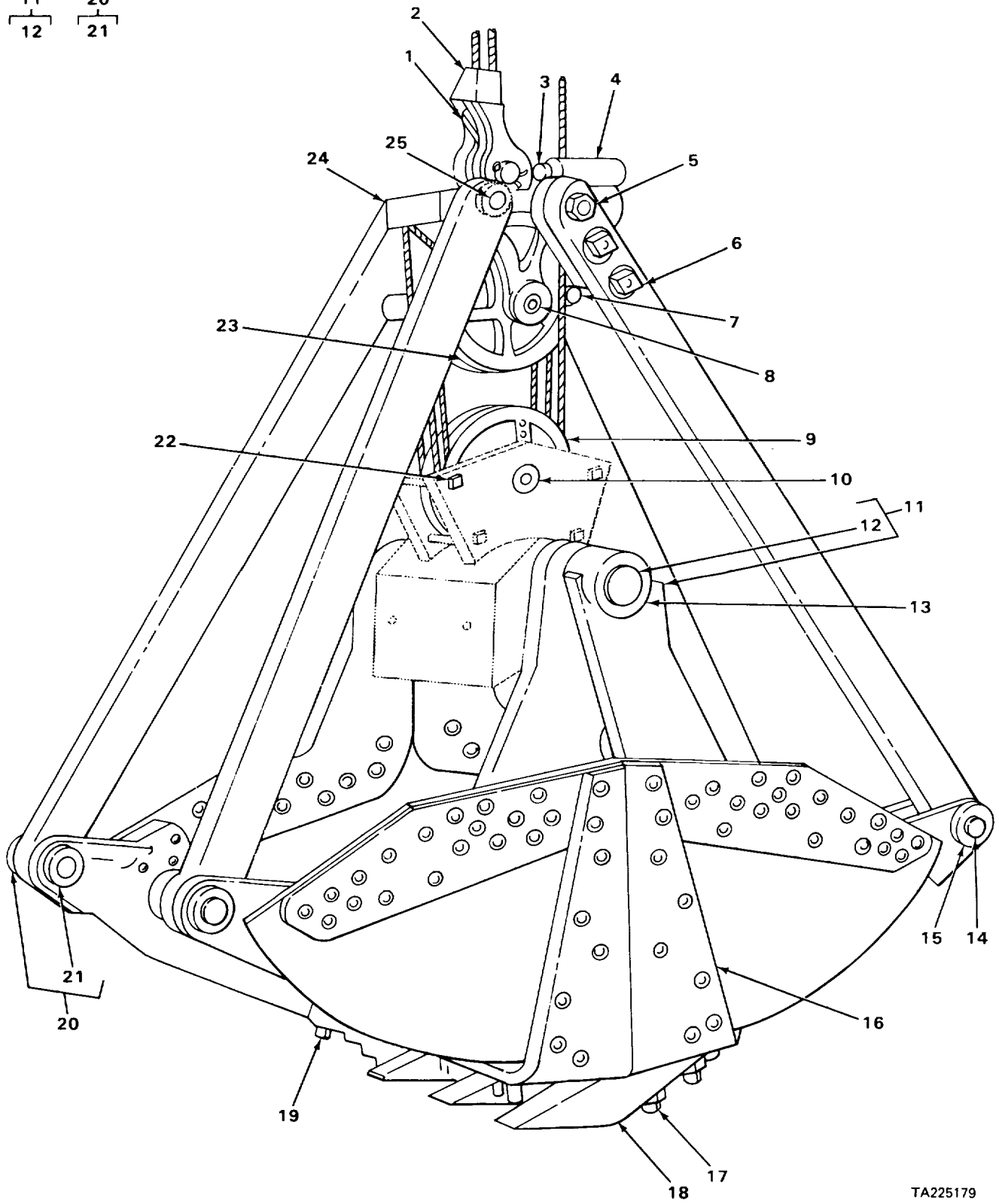


FIGURE 5. CLAMSHELL BUCKET, MODEL AB1HE.

TA225179

SECTION II

TM 5-3815-200-23P

(1) ILLUSTRATION		(2)	(3)	(4)	(5)	(6)	(7)	(8)
(a) FIG NO.	(b) ITEM NO.	SMR CODE	NATIONAL STOCK NUMBER	FSCM	PART NUMBER	DESCRIPTION  USABLE ON CODE	U/M	QTY INC IN UNIT
7411(CONT)								
5	1	XD0ZZ		26802	HB1AX3793-2	WEDGE, WIRE ROPE SOC ..... V51	EA	1
5	1	PF0ZZ	4030-00-603-4829	46717	RC15066	WEDGE, WIRE ROPE SOC ..... V51	EA	1
5	2	XB0ZZ		46717	X4874	SOCKET, WIRE ROPE ..... V51	EA	1
5	3	PFFZZ	5315-00-352-1833	46717	3641	PIN, STRAIGHT, HEADLE UPPER CABLE GUIDE.....		
						ROLLER ..... V51	EA	2
5	4	PFFZZ	3815-00-377-6768	46717	RA3643	ROLLER GUIDE, CABLE, UPPER ..... V51	EA	2
5	5	PFFZZ	3815-00-377-6770	46717	3645	SHAFT HEAD STATIONARY SIDE ..... V51	EA	1
5	6	XD0ZZ		26802	HB40RA15412	BOLT, MACHINE STATIONARY CONNECTING ARM SQUARE HEAD..... V51	EA	4
5	7	PF0ZZ	3815-00-695-0584	46717	6667	GUARD WIRE ROPE, UPPER PULLEY ..... V51	EA	2
5	8	PFFZZ	3815-00-377-6787	46717	X5268	SHAFT CLOSING, PULLEY, UPPER ..... V51	EA	1
5	9	PBFZZ	3020-00-174-5515	46717	B4712	PULLEY, GROOVE UPPER ..... V51	EA	2
5	10	PFFZZ	3815-00-377-6774	46717	RA3792A	SHAFT LOWER PULLEY ..... V51	EA	1
5	11	XBFFF		46717	04533	ARM, BLADE OUTER, LH & RH..... V51	EA	1
5	11	XBFFF		46717	RA15154	ARM, BLADE INNER, LH..... V51	EA	1
5	11	XBFFF		46717	RA15153	ARM, BLADE INNER, RH..... V51	EA	1
5	12	PF0ZZ	3120-00-662-1042	46717	2516	.BEARING BLADE ARM ..... V51	EA	2
5	13	PFFZZ	3815-00-352-1649	46717	A7235	SHAFT CLOSING ARM. .... V51	EA	1
5	14	PFFZZ	5315-00-377-5308	46717	RA4604	PIN, STRAIGHT, HEADLE CORNER BRACKET..... V51	EA	4
5	15	PFFZZ	3815-00-024-2238	46717	RE15293L	BRACKET CONNECTING ARM, LH..... V51	EA	2
5	15	XBFZZ		46717	BH4291	BRACKET, CONNECTING RH ..... V51	EA	2
5	16	XBFZZ		46717	RC15334	JAW, BUCKET LH AND RH ..... V51	EA	2
5	17	PF0ZZ	5306-00-426-2163	46717	X5326	BOLT, KEY HEAD TOOTH POINT ..... V51	EA	6
5	17	PF0ZZ	5306-00-572-8910	46717	RA15219	BOLT, MACHINE TOOTH POINT..... V51	EA	6
5	18	PB0ZZ	3815-00-377-6779	46717	BH5325A	TOOTH POINT CLAMSHELL BUCKET ..... V51	EA	6
5	19	XD0ZZ		46717	RA15222	BOLT, MACHINE TOOTH POINT..... V51	EA	6
5	20	XBFFF		46717	RB15145	ARM, CONNECTING PIVOT, LH AND RH V51 ..... V51	EA	4
5	20	XBFFF		46717	RB15143	ARM, CONNECTING STATIONARY, LH..... V51	EA	2
5	20	XBFFF		46717	RB15144	ARM, CONNECTING STATIONARY, RH. .... V51	EA	2
5	21	PFFZZ	3120-00-661-6649	46717	5871	.BUSHING CONNECTING ARM USE WITH P/N R15145 ..... V51	EA	1

SECTION II

TM 5-3815-200-23P

(1) ILLUSTRATION		(2)	(3)	(4)	(5)	(6)	(7)	(8)
(a) FIG NO.	(b) ITEM NO.	SMR CODE	NATIONAL STOCK NUMBER	FSCM	PART NUMBER	DESCRIPTION  USABLE ON CODE	U/M	QTY INC IN UNIT
						7411(CONT)		
5	21	PFFZZ	3120-00-661-6649	46717	5871	.BUSHING CONNECTING ARM USE WITH P/N RB5143..... V5	EA	2
5	21	PFFZZ	3120-00-661-6649	46717	5871	.BUSHING CONNECTING ARM USE WITH P/N RB5144..... V51	EA	1
5	22	PF0ZZ	5305-00-281-8222	46717	6670	SCREW, MACHINE ROPE GUARD, COUNTERSUNK HEAD..... V51	EA	2
5	22	XD0ZZ		46717	6666	BOLT, MACHINE BLOCK, SQUARE HEAD ..... V51	EA	2
5	22	XD0ZZ		46717	6669	BOLT, MACHINE ROPE GUARD, SQUARE HEAD.... V51	EA	2
5	23	PFFZZ	3020-00-270-3530	46717	C4712	PULLEY, GROOVE LOWER ..... V51	EA	3
5	24	XBFZZ		46717	RE3543C	HEADPIECE CLAMSHELL BUCKET..... V51	EA	1
5	25	PFFZZ	3815-00-377-6771	46717	RA14185A	SHAFT HEAD, PIVOT SIDE ..... V51	EA	1
<b>20/(21 blank)</b>								

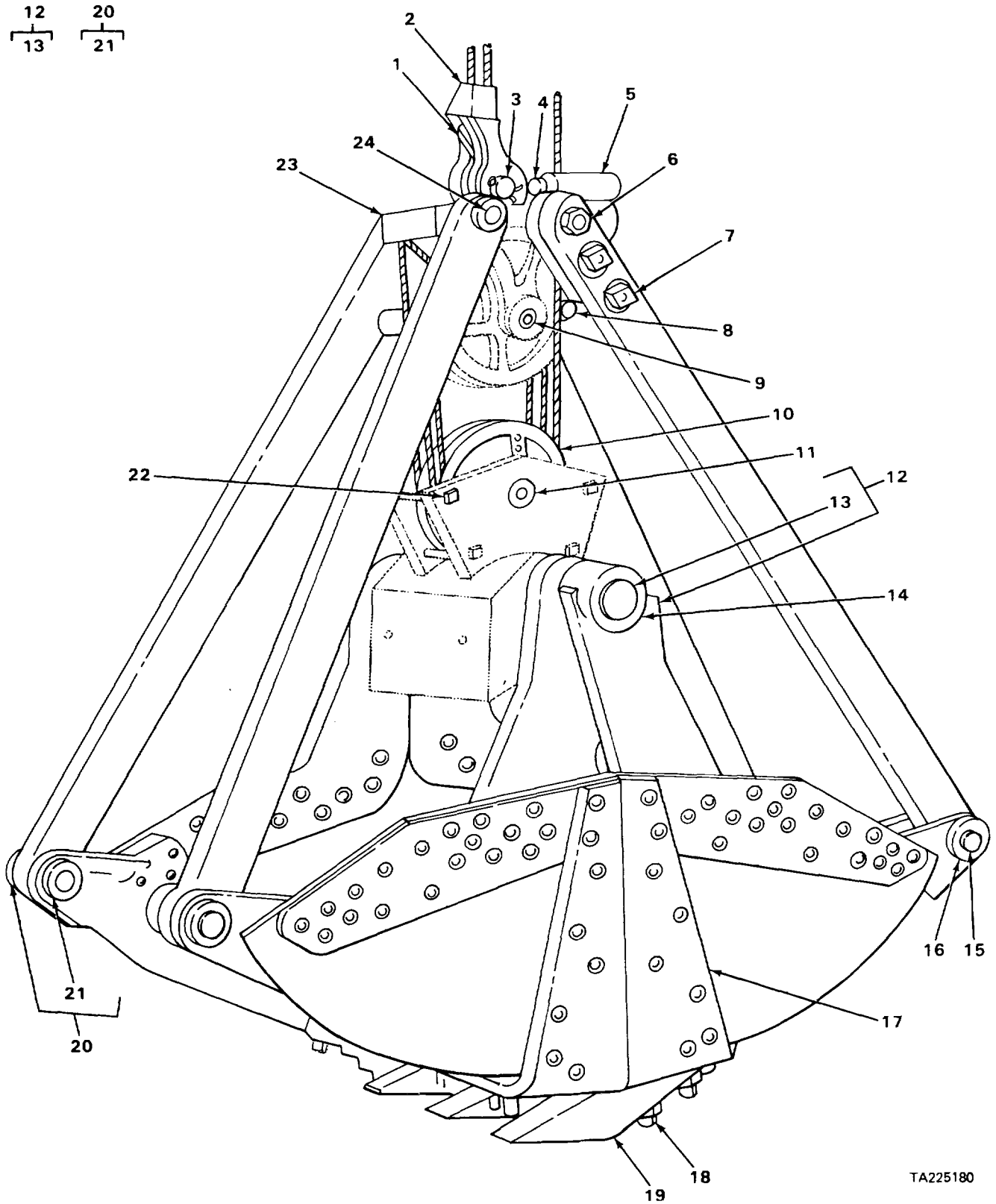


FIGURE 6. CLAMSHELL BUCKET, MODEL AB1KE.

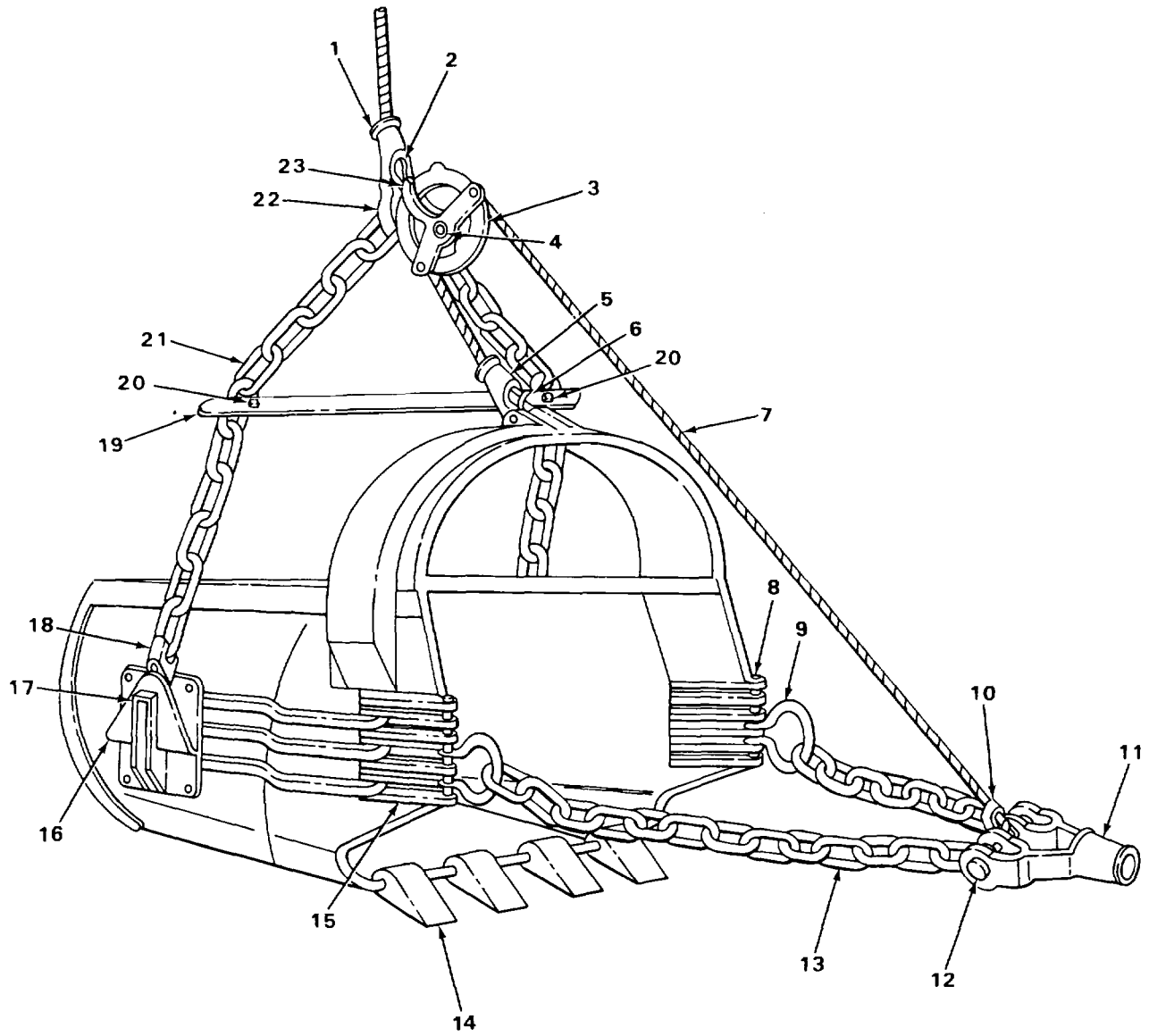
(1) ILLUSTRATION		(2)	(3)	(4)	(5)	(6)	(7)	(8)
(a) FIG NO.	(b) ITEM NO.	SMR CODE	NATIONAL STOCK NUMBER	FSCM	PART NUMBER	DESCRIPTION  USABLE ON CODE	U/M	QTY INC IN UNIT
7411 (CONT)								
6	1	XD0ZZ		26802	RC15068	WEDGE, WIRE ROPE SOC ..... T67	EA	1
6	2	XB0ZZ		26802	HB31AD170A	SOCKET, WIRE ROPE ..... T67	EA	1
6	3	PF0ZZ	5315-00-274-4297	46717	RA7141	PIN, STRAGHT, HEADLE CABLE SOCKET ..... T67	EA	1
6	4	PFFZZ	5315-00-374-5496	46717	X3493	SHAFT UPPER CABLE ROLLER GUIDE ..... T67	EA	2
6	5	XDFZZ		46717	3504	ROLLER GUIDE, CABLE, UPPER ..... T67	EA	2
6	6	PFFZZ	3815-00-544-1062	46717	X3539	SHAFT HEAD, STATIONARY SIDE ..... T67	EA	1
6	7	PF0ZZ	5306-00-281-5593	46717	7941	BOLT, MACHINE STATIONARY CONNECTING ARM ..... T67	EA	4
6	8	XB0ZZ		46717	L2254-30	GUARD WIRE ROPE ..... T67	EA	2
6	9	PFFZZ	3815-00-707-8931	46717	RA3540	SHAFT CLOSING, PULLEY, UPPER ..... T67	EA	1
6	10	PF0ZZ	3020-00-200-2029	93543	RA15609	PULLEY, GROOVE LOWER UPPER ..... T67	EA	5
6	11	PFFZZ	3815-00-374-5503	46717	RB-3760	SHAFT CLOSING PULLEY, LOWER ..... T67	EA	1
6	12	XBFFF		46717	0116A	ARM, BLADE OUTER, LH ..... T67	EA	1
6	12	XBFFF		46717	D117A	ARM, BLADE OUTER, RH ..... T67	EA	1
6	2	XBFFF		46717	X7190-1	ARM, BLADE INNER, LH ..... T67	EA	1
6	12	XBFFF		46717	X7190-2	ARM, BLADE INNER, RH ..... T67	EA	1
6	13	XB0ZZ		46717	5888	.BEARING BLADE ARM ..... T67	EA	2
6	14	PFFZZ	3815-00-377-6789	46717	X7772	SHAFT CLOSING ARM ..... T67	EA	1
6	15	XDFZZ		46717	X4496	PIN, STRAIGHT, HEADLE CORNER BRACKET ..... T67	EA	4
6	16	XBFZZ		46717	BH4291-1	BRACKET, CONNECTING LH ..... T67	EA	2
6	17	XBFZZ		46717	BH4232	JAW, BUCKET LH AND R.H ..... T67	EA	2
6	17	XBFZZ		46717	BH4235	JAW, BUCKET LH AND RH ..... T67	EA	2
6	18	PF0ZZ	5306-00-322-1022	46717	X3850-2	BOLT, MACHINE TOOTH POINT ..... T67	EA	6
6	18	PF0ZZ	5306-00-322-1022	46717	X3850-2	BOLT, KEY HEAD TOOTH POINT. .... T67	EA	12
6	18	PF0ZZ	5306-00-377-6777	46717	5224	BOLT, CARRIAGE TOOTH POINT ..... T67	EA	12
6	19	PF0ZZ	3815-00-374-5506	46717	AH-7440	TOOTH POINT CLAMSHELL BUCKET ..... T67	EA	6
6	20	XBFFF		46717	X8419-3	ARM, CONNECTING PIVOT, RH ..... T67	EA	2
6	20	XBFFF		46717	X8419-1	ARM, CONNECTING STATIONARY, LH ..... T67	EA	1
6	20	XBFFF		46717	X8419-2	ARM, CONNECTING STATIONARY, RH ..... T67	EA	1
6	21	XDFZZ		46717	5872	.BEARING CONNECTING ARM USE WITH P/N X8419-3 ..... T67	EA	2

SECTION II

TM 5-3815-200-23P

(1) ILLUSTRATION		(2)	(3)	(4)	(5)	(6)	(7)	(8)
(a) FIG NO.	(b) ITEM NO.	SMR CODE	NATIONAL STOCK NUMBER	FSCM	PART NUMBER	DESCRIPTION  USABLE ON CODE	U/M	QTY INC IN UNIT
						7411(CONT)		
6	21	XBFZZ		46717	5872	.BEARING CONNECTING ARM USE WITH P/N X8419-2 ..... T67	EA	1
6	21	XBFZZ		46717	5872	.BEARING CONNECTING ARM USE WITH PN X8419-1 ..... T67	EA	1
6	22	XDOZZ		46717	3-4X9	BOLT, MACHINE ROPE GUARD COUNTERSUNK HEAD..... T67	EA	4
6	23	XBFZZ		46717	AH5202C	HEADPIECE CLAMSHELL BUCKET..... T67	EA	1
6	24	PFFZZ	3815-00-374-5501	93543	R83541-1	SHAFT HEAD, PIVOT SIDE ..... T67	EA	1
<b>24/(25 blank)</b>								





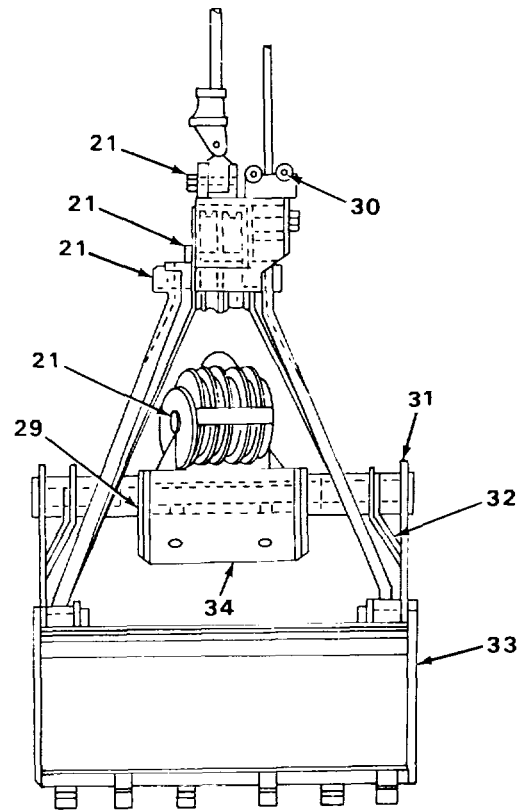
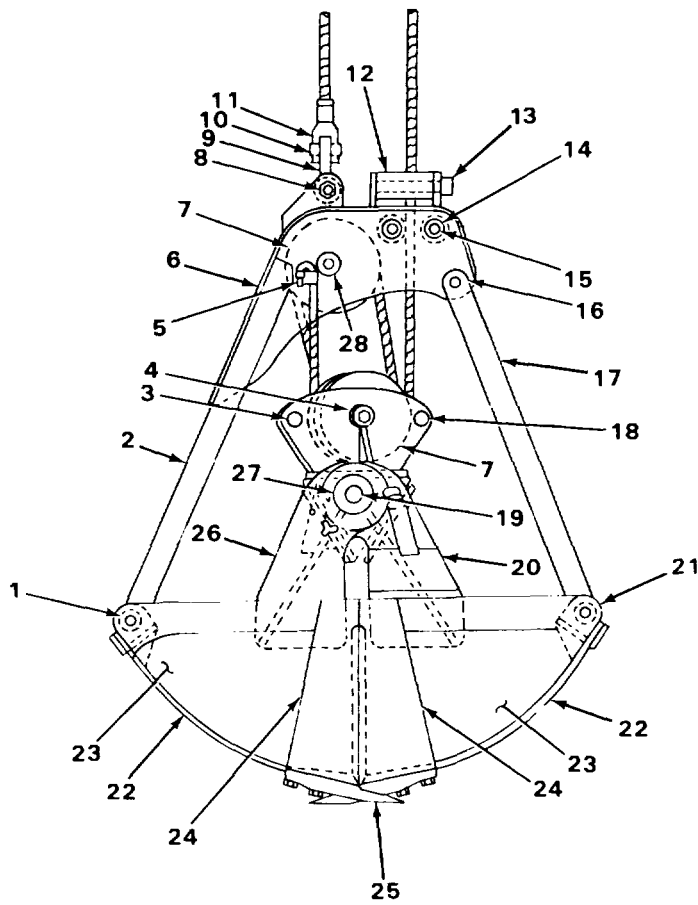
TA225181

FIGURE 7. DRAGLINE BUCKET, MODEL A,  $\frac{3}{4}$  CU. YD..

SECTION II

TM 5-3815-200-23P

(1) ILLUSTRATION		(2)	(3)	(4)	(5)	(6)	(7)	(8)
(a) FIG NO.	(b) ITEM NO.	SMR CODE	NATIONAL STOCK NUMBER	FSCM	PART NUMBER	DESCRIPTION  USABLE ON CODE	U/M	QTY INC IN UNIT
7411 (CONT)								
7	1	PF0ZZ	4030-00-691-7975	81615	Y351	SOCKET, DOUBLE EYE DUMP BLOCK..... T69	EA	1
7	2	PA0ZZ	4030-00-354-3441	81615	Y351W	WEDGE DOUBLE EYE AND PULL BALL SOCKET..... T69	EA	2
7	3	XB0ZZ		81615	Y101S	PULLEY, GROOVE DUMP BLOCK..... T69	EA	1
7	4	XB0ZZ		81615	7-8X4-1-2	SHAFT DUMP BLOCK PULLEY..... T69	EA	1
7	5	XB0ZZ		81615	Y201	SOCKET, WIRE ROPE HOLD..... T69	EA	1
7	6	PF0ZZ	4030-00-530-4111	81615	Y251W	WEDGE DUMP ROPE SOCKET..... T69	EA	2
7	7	M00ZZ		19207	2699299-180	WIRE ROPE, STEEL DRAGLINE BUCKET CONTROL MANUFACTURE FROM NSN 4010-00-997-8432..... T69	EA	1
7	8	XD0ZZ		81615	Y64	PIN, STRAIGHT, HEADED LOAD HITCH SHACKLE .. T69	EA	2
7	9	PF0ZZ	4030-00-354-3452	81615	Y74	SHACKLE, CHAIN LOAD HITCH..... T69	EA	2
7	10	XB0ZZ		81615	Y251	SOCKET, WIRE ROPE DUMP..... T69	EA	1
7	11	PA0ZZ	3815-00-354-3438	84092	174357	SOCKET, PULLING BAIL..... T69	EA	1
7	12	XB0ZZ		81615	Y300P	PIN, STRAIGHT HEADLE PULL BAIL SOCKET..... T69	EA	1
7	13	XB0ZZ		81615	Y401	CHAIN, WELDED LOAD HITCH TO PULL BAIL SOCKET..... T69	EA	2
7	14	PF0ZZ	3815-00-354-3435	81615	Y161A	TOOTH POINT DRAGLINE BUCKET..... T69	EA	4
7	15	XBFZZ		81615	Y54	PLATE, CHAIN SHACKLE LOAD HITCH..... T69	EA	2
7	16	XBFZZ		81615	Y5	TRUNNION HOIST CHAIN CLEVIS..... T69	EA	2
7	17	PF0ZZ	5315-00-276-3635	81615	Y15P	PIN, TRUNNION LINK..... T69	EA	2
7	17	XD0ZZ		81615	Y25	PIN, TRUNNION LINK..... T69	EA	2
7	18	PF0ZZ	3815-00-691-9755	84092	174133	LINK, TRUNNION HOIST CHAIN..... T69	EA	2
7	19	PF0ZZ	3815-00-354-3446	81615	Y500	BAR, SPREADER HOIST CHAIN..... T69	EA	2
7	20	XD0ZZ		81615	3-4X3-1-2	BOLT, MACHINE SPREADER BAR ATTACHING, SQUARE HEAD, W/SQUARE NUT..... T69	EA	2
7	21	XB0ZZ		81615	Y411	CHAIN, WELDED HOIST, BLOCK TO TRUNNION..... T69	EA	2
7	22	PF0ZZ	4030-00-354-3444	81615	Y450	SHACKLE HOIST BLOCK..... T69	EA	1
7	23	XB0ZZ		81615	Y101H	HOUSING DUMP PULLEY..... T69	EA	1



TA225182

FIGURE 8. CLAMSHELL BUCKET, MODEL GP34S/GP34SZ.

SECTION II

TM 5-3815-200-23P

(1) ILLUSTRATION		(2)	(3)	(4)	(5)	(6)	(7)	(8)
(a) FIG NO.	(b) ITEM NO.	SMR CODE	NATIONAL STOCK NUMBER	FSCM	PART NUMBER	DESCRIPTION  USABLE ON CODE	U/M	QTY INC IN UNIT
						7411 (CONT)		
8	1	PF0ZZ		78998	29531	LOWER CORNER ARM ..... BKT	EA	4
8	1	PF0ZZ		78998	20246	LOWER ARM BAR BUSHI ..... BKT	EA	4
8	2	XD0FF		78998	137710L	CORNER ARM-FIXED LH ..... BKT	EA	1
8	2	XD0FF		78998	137710R	CORNER ARM-FIXED RH ..... BKT	EA	1
8	3	XD0ZZ		78998	L-7	SPOOL ..... BKT	EA	2
8	4	PF0ZZ		78998	33738	LOWER SHEAVE PIN ..... BKT	EA	1
8	5	PF0ZZ		78998W	9	CLOSING LINE WEDGE ..... BKT	EA	2
8	6	XD0ZZ		54658	78998	HEAD-WELDMENT ..... BKT	EA	1
8	7	PF0ZZ		78998	CA694B	CLOSING SHEAVE UPPER & LOWER ..... BKT	EA	5
8	7	PF0ZZ		78998	2976	BUSH CLOSING SHEAVE ..... BKT	EA	5
8	8	PF0ZZ		78998	31424	HOLDING LINE PIN ..... BKT	EA	1
8	9	XD0ZZ		78998	M-495	HOLDING LINK ..... BKT	EA	1
8	10	PF0ZZ		78998	21165	HOLDING SOCKET PIN ..... BKT	EA	1
8	11	XD0ZZ		78998	WS-74A	HOLDING SOCKET ..... BKT	EA	1
8	12	PF0ZZ		78998	51123	UPPER ROLLER ..... BKT	EA	2
8	13	PF0ZZ		96906	MS24665-786	LOWER ROLLER PIN ..... BKT	EA	2
8	13	PF0ZZ		96906	M24665-769	UPPER ROLLER PIN (35) KEEPER ..... BKT	EA	2
8	14	PF0ZZ		78998	51223	LOWER ROLLER ..... BKT	EA	2
8	15	PF0ZZ		78998	61820	LOWER ROLLER PIN ..... BKT	EA	2
8	16	PF0ZZ		78998	76819	UPPER CORNER ARM PIN ..... BKT	EA	1
8	16	XD0ZZ		78998	25275	UPPER ARM PIN BUSHING ..... BKT	EA	21
8	17	XD0FF		78998	137709	CORNER ARM-MOVING ..... BKT	EA	2
8	18	XD0ZZ		78998	183840	LOWER SHEAVE HOUSIN BLOCK ASSY ..... BKT	EA	1
8	19	XD0ZZ		78998	64741	CENTER SHAFT ..... BKT	EA	1
8	20	XD0ZZ		78998	30313	INNER HINGE ..... BKT	EA	1
8	21	PF0ZZ		96906	MS24665-860	HOLD LINK PIN ..... BKT	EA	7
8	22	XD0ZZ		78998	243503	BOTTOM PLATE ..... BKT	EA	2
8	23	XD0ZZ		78998	C-14220	SCOOP-COMPLETE TWO OR THREE TOOTH ..... BKT	EA	1
8	24	XD0ZZ		78998	243552	LIPS SPECIFY TWO OR THREE TOOTH ..... BKT	EA	1

SECTION II

TM 5-3815-200-23P

(1) ILLUSTRATION		(2)	(3)	(4)	(5)	(6)	(7)	(8)
(a) FIG NO.	(b) ITEM NO.	SMR CODE	NATIONAL STOCK NUMBER	FSCM	PART NUMBER	DESCRIPTION  USABLE ON CODE	U/M	QTY INC IN UNIT
						7411 (CONT)		
8	25	PF0ZZ		78998	36772	TOOTH-BOTTO USE ON MDLGP34SZ ..... BKT	EA	5
8	25	PF0ZZ		78998	280238	TOOTH SHANK ..... BKT	EA	5
8	25	PF0ZZ		78998	273964	TOOTH TIP ..... BKT	EA	5
8	25	PF0ZZ		78998	MK-44	TOOTH KEEPER ..... BKT	EA	5
8	25	PF0ZZ		78998	MKL-44	TOOTH KEEPER LK ..... BKT	EA	5
8	25	PF0ZZ		78998	T-289-G	TOOTH USE ON MDLGP34S ..... BKT	EA	5
8	26	X00ZZ		78998	30314	OUTER HINGE LH ..... BKT	EA	1
8	27	XD0ZZ		78998	10290	HINGE AND CENTER BLOCK BUSHING ..... BKT	EA	4
8	27	XD0ZZ		78998	2307	CENTER SHAFT 16 KEEPER ..... BKT	EA	2
8	28	PF0ZZ		78998	43030	UPPER SHEAVE PIN ..... BKT	EA	1
8	29	XD0ZZ		78998	83840	CENTER BLOCK ..... BKT	EA	1
8	30	PF0ZZ		78998	61920	UPPER ROLLER PIN ..... BKT	EA	2
8	31	XD0ZZ		78998	30315	OUTER HINGE RH ..... BKT	EA	1
8	32	XD0ZZ		78998	3036	NNER HINGE RH ..... BKT	EA	1
8	33	XD0ZZ		78998	242101R	SIDE PLATE RH ..... BKT	EA	2
8	33	XD0ZZ		78998	24202L	SIDE PLATE LH ..... BKT	EA	2
8	34	XD0ZZ		78998	A-3010	COUNTERWEIGHT ..... BKT	EA	2
<b>30/(31 blank)</b>								

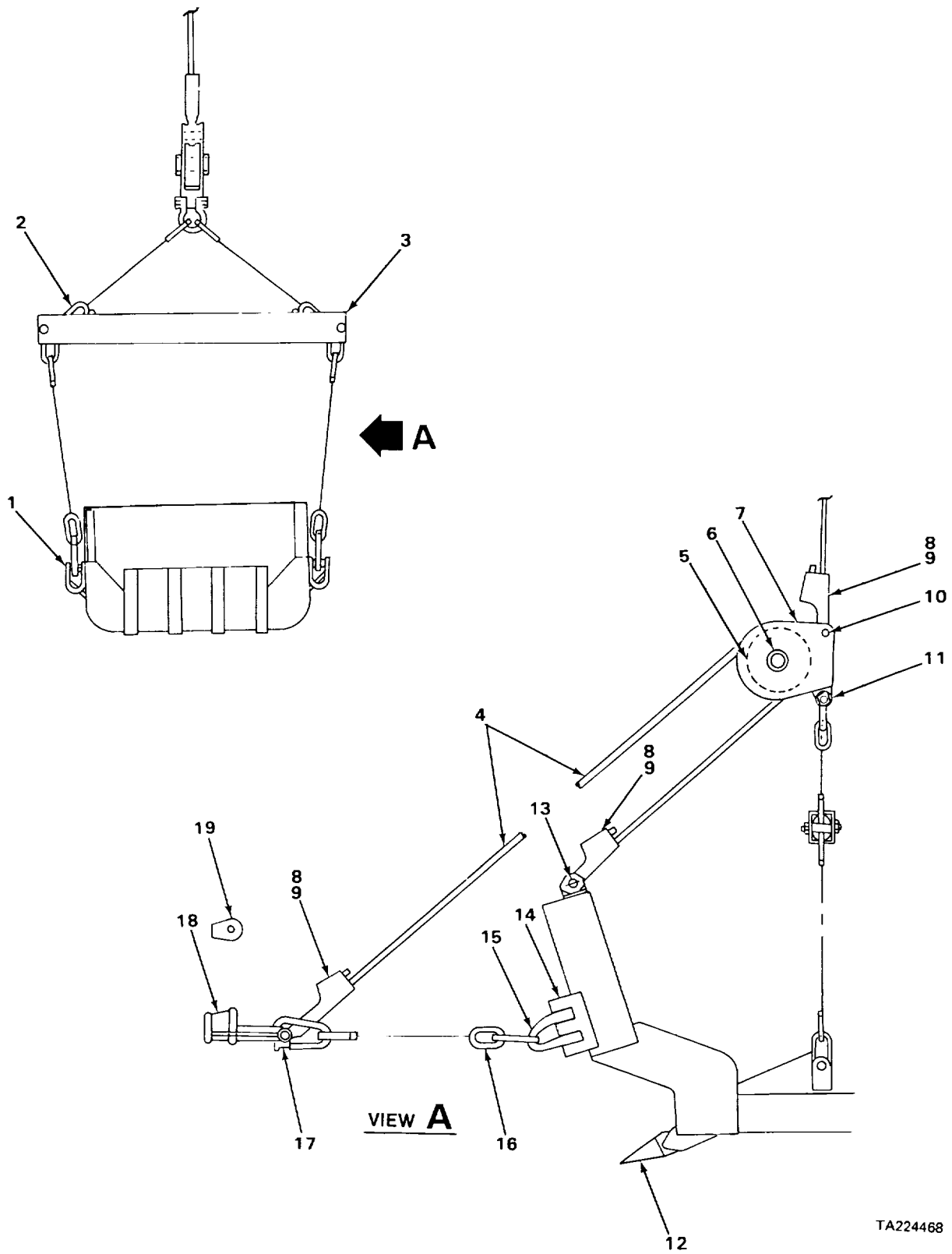


FIGURE 9. DRAGLINE BUCKET, MODEL DLM 34G.

SECTION II

TM 5-3815-200-23P

(1) ILLUSTRATION		(2)	(3)	(4)	(5)	(6)	(7)	(8)
(a) FIG NO.	(b) ITEM NO.	SMR CODE	NATIONAL STOCK NUMBER	FSCM	PART NUMBER	DESCRIPTION  USABLE ON CODE	U/M	QTY INC IN UNIT
						7411(CONT)		
9	1	XD0ZZ		20874	20807	TRUNNION PIN..... BKD	EA	2
9	2	XD0ZZ		20874	56063	BAIL CHAIN..... BKD	EA	2
9	3	XD0ZZ		20874	B-69327	SPREADER BAR..... BKD	EA	1
9	4	XD0ZZ		20874	13079	DUMP CABLE..... BKD	EA	1
9	5	XD0ZZ		20874	C69304	DUMP SHEAVE..... BKD	EA	1
9	6	XD0ZZ		20874	A-69336	PIN, DUMP SHEAVE..... BKD	EA	1
9	7	XD0ZZ		20874	B-69303	HOUSING, DUMP SHEAVE..... BKD	EA	1
9	8	PA0ZZ	4030-01-159-1566	20874	11942	WEDGE, WIRE ROPE SOC LOWER DUMP SOCKET	BKD EA	
3								
9	9	XD0ZZ		20874	11520	SOCKET, LOWER DUMP..... BKD	EA	3
9	10	XD0ZZ		20874	20805	PIN UPPER DUMP SOCKET..... BKD	EA	1
9	11	XD0ZZ		20874	11443	SHACKLE BAIL CHAIN..... BKD	EA	1
9	12	PA0ZZ	3815-00-491-5158	20874	88853	TOOTH, BUCKET POINT..... BKD	EA	4
9	13	XD0ZZ		20874	20809	PIN ANCHOR SOCKET..... BKD	EA	1
9	14	XD0ZZ		20874	20808	PIN, HITCH..... BKD	EA	2
9	15	XD0ZZ		20874	M-455-8	CLEVIS, HITCH..... BKD	EA	2
9	16	XD0ZZ		20874	56060	DRAG CHAIN..... BKD	EA	2
9	17	XD0ZZ		20874	15432	PIN DRAG SOCKET..... BKD	EA	1
9	18	X00ZZ		20874	11519	SOCKET, DRAG..... BKD	EA	1
9	19	X00ZZ		20874	11943	WEDGE DRAG SOCKET..... BKD	EA	1

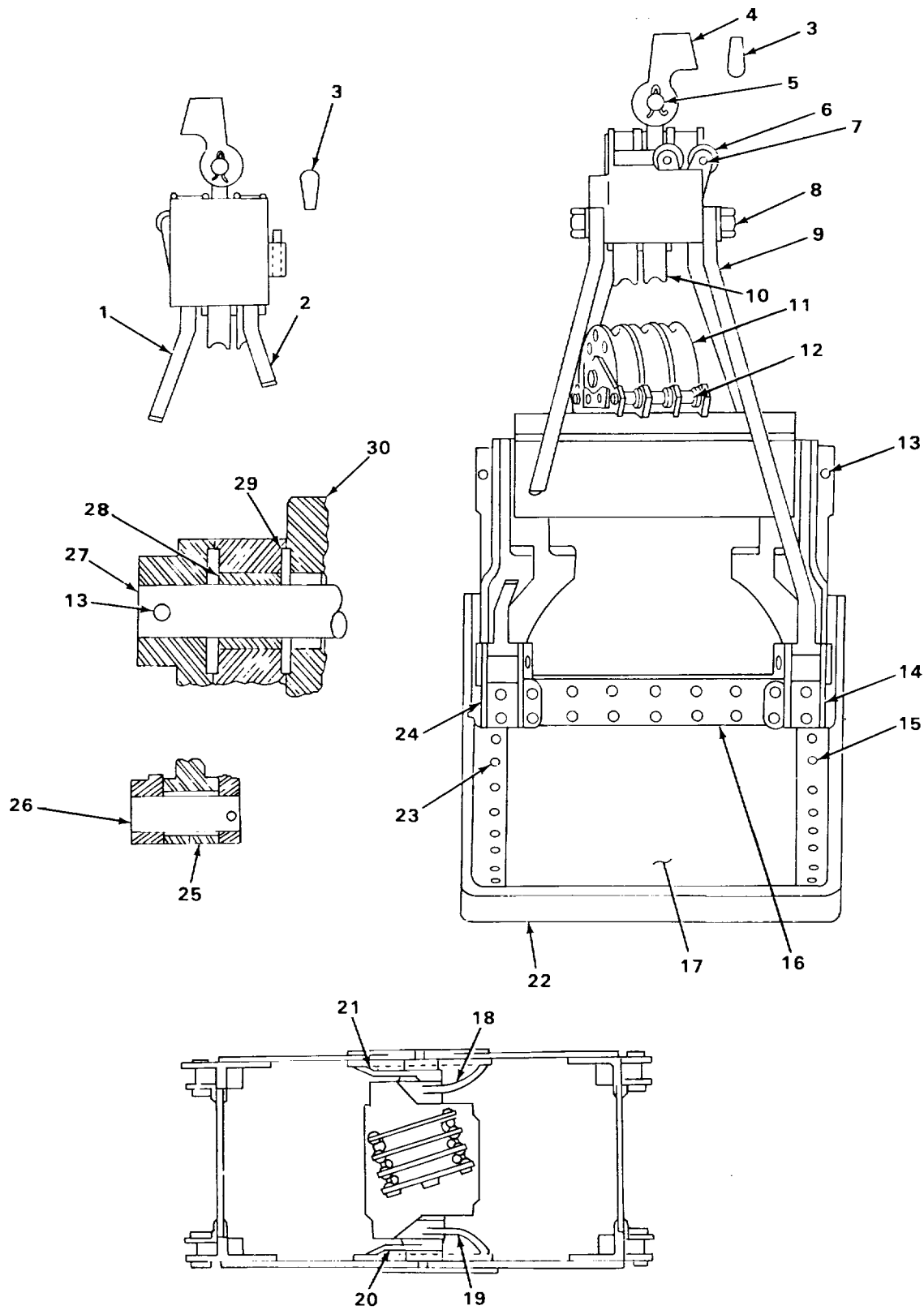


FIGURE 10. CLAMSHELL BUCKET, MODEL M230.



SECTION II

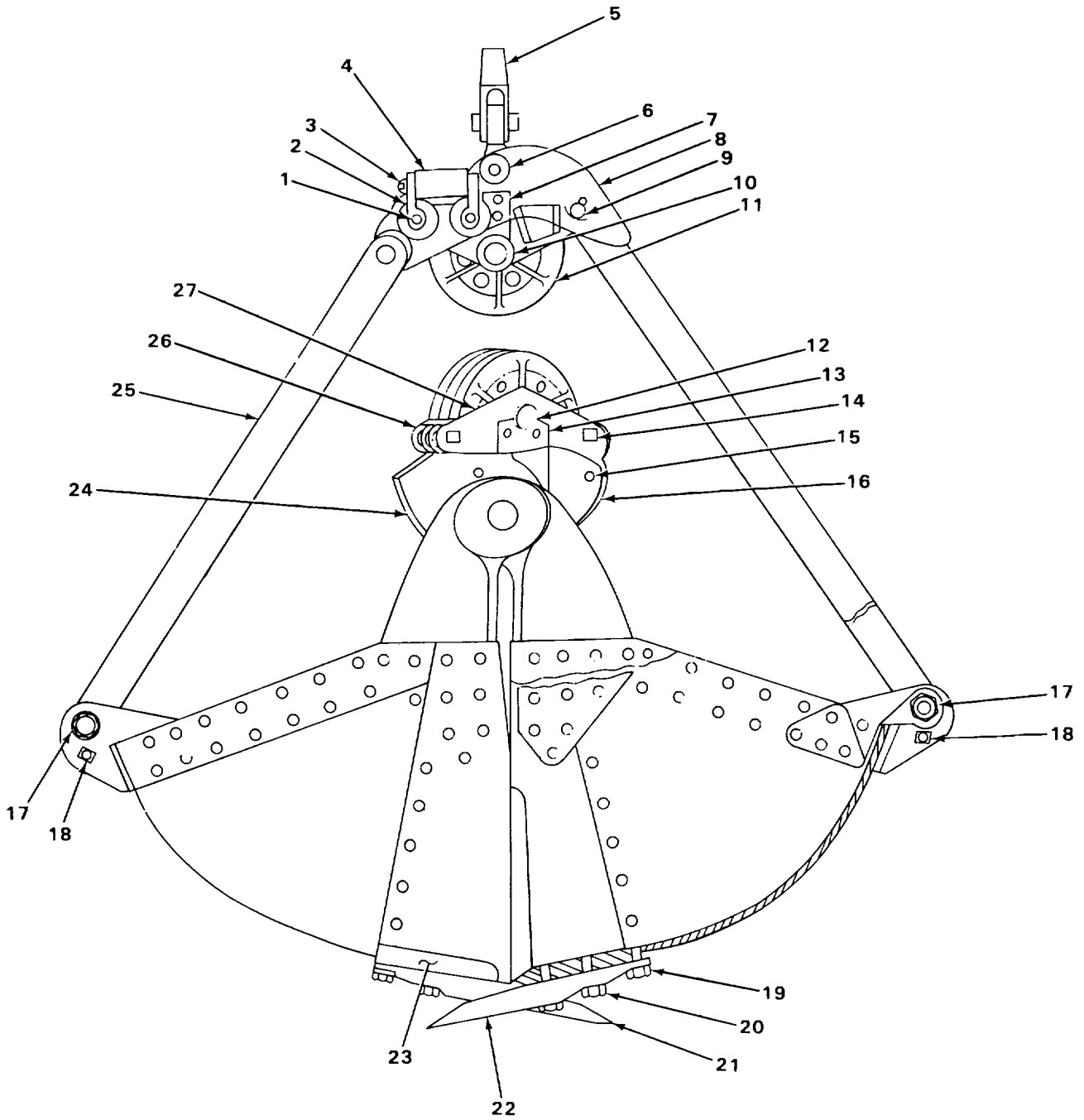
TM 5-3815-200-23P

(1) ILLUSTRATION		(2)	(3)	(4)	(5)	(6)	(7)	(8)
(a) FIG NO.	(b) ITEM NO.	SMR CODE	NATIONAL STOCK NUMBER	FSCM	PART NUMBER	DESCRIPTION  USABLE ON CODE	U/M	QTY INC IN UNIT
						7411(CONT)		
10	1	XDOZZ		78998	1001	ARM LEFT INSIDE ..... BK2	EA	1
10	2	XDOZZ		78998	1002	ARM RIGHT INSIDE ..... BK2	EA	1
10	3	XDOZZ		78998	1133	WEDGE SOCKET ..... BK2	EA	1
10	4	XDOZZ		78998	1131	SOCKET HOLDING WEDGE ..... BK2	EA	1
10	5	XDOZZ		78998	1124	PIN, YOKE ..... BK2	EA	1
10	6	XDOZZ		78998	1126	ROLLER, TOP ..... BK2	EA	1
10	7	XDOZZ		78998	1121	PIN TOP ROLLER ..... BK2	EA	1
10	8	XDOZZ		78998	1116	PIN ARM HEAD ..... BK2	EA	1
10	9	XDOZZ		78998	1003	ARM, OUTSIDE ..... BK2	EA	1
10	11	XDOZZ		78998	1202	SHEAVE, CLOSING ..... BK2	EA	1
10	10	XDOZZ		78998	1129	SHEAVE, CLOSING ..... BK2	EA	1
10	11	XDOZZ		78998	1422	SHEAVE, CLOSING ..... BK2	EA	1
10	12	XDOZZ		78998	1427	SPOOL, BLOCK ..... BK2	EA	6
10	13	XDOZZ		78998	1418	PIN, HINGE ..... BK2	EA	2
10	14	XDOZZ		78998	1202	BRACKET RIGHT ARM ..... BK2	EA	2
10	15	XDOZZ		78998	1307	PLATE RIGHT SIDE ..... BK2	EA	2
10	16	XDOZZ		78998	1302	PLATE BACKSTRAP ..... BK2	EA	2
10	17	XDOZZ		78998	1301	PLATE, BOTTOM ..... BK2	EA	2
10	18	XDOZZ		78998	1415	HINGE RIGHT OUTSIDE ..... BK2	EA	1
10	19	XDOZZ		78998	1414	HINGE LEFT OUTSIDE ..... BK2	EA	1
10	20	XDOZZ		78998	1416	HINGE RIGHT INSIDE ..... BK2	EA	1
10	21	XDOZZ		78998	1413	HINGE LEFT INSIDE ..... BK2	EA	1
10	22	XDOZZ		78998	1304	LIP ..... BK2	EA	1
10	23	XDOZZ		78998	1306	PLATE LEFT SIDE, ..... BK2	EA	2
10	24	XDOZZ		78998	1201	BRACKET LEFT ARM ..... BK2	EA	2
10	25	XDOZZ		78998	1009	BUSHING ..... BK2	EA	4
10	26	XDOZZ		78998	1205	PIN ARM BRACKET ..... BK2	EA	2
10	27	XDOZZ		78998	1421	SHAFT, WEIGHT ..... BK2	EA	1
10	28	XDOZZ		78998	1410	BUSHING, HINGE ..... BK2	EA	2
10	29	XDOZZ		78998	1428	WASHER, HINGE ..... BK2	EA	4

SECTION II

TM 5-3815-200-23P

(1) ILLUSTRATION		(2)	(3)	(4)	(5)	(6)	(7)	(8)
(a) FIG NO.	(b) ITEM NO.	SMR CODE	NATIONAL STOCK NUMBER	FSCM	PART NUMBER	DESCRIPTION  USABLE ON CODE	U/M	QTY INC IN UNIT
10	30	XD0ZZ		78998	1412	7411 (CONT) BUSHING,WEIGHT .....BK2	EA	2
					<b>36/(37 blank)</b>			



TA222470

FIGURE 11. CLAMSHELL BUCKET COMPONENTS, MODEL M230.

SECTION II

TM 5-3815-200-23P

(1) ILLUSTRATION		(2)	(3)	(4)	(5)	(6)	(7)	(8)
(a) FIG NO.	(b) ITEM NO.	SMR CODE	NATIONAL STOCK NUMBER	FSCM	PART NUMBER	DESCRIPTION  USABLE ON CODE	U/M	QTY INC IN UNIT
						7411 (CONT)		
11	1	XD0ZZ		78998	1120	PIN BOTTOM ROLLER ..... BK2	EA	2
11	2	XD0ZZ		78998	1125	ROLLER BOTTOM ..... BK2	EA	2
11	3	XD0ZZ		78998	1121	PIN TOP ROLLER ..... BK2	EA	1
11	4	XD0ZZ		78998	1126	ROLLER TOP ..... BK2	EA	1
11	5	XD0ZZ		78998	1135	YOKE ..... BK2	EA	1
11	6	XD0ZZ		78998	1119	PIN HOLDING LINE ..... BK2	EA	1
11	7	XD0ZZ		78998	1115	LOCK PLATE ..... BK2	EA	1
11	8	XD0ZZ		78998	1108	CROSSHEAD ..... BK2	EA	1
11	9	XD0ZZ		78998	1117	PIN,DRIVE FIT HEAD ..... BK2	EA	1
11	10	XD0ZZ		78998	1123	PIN UPPER SHEAVE ..... BK2	EA	1
11	11	XD0ZZ		78998	1129	SHEAVE,CLOSING ..... BK2	EA	1
11	12	XD0ZZ		78998	1419	PIN LOWER SHEAVE ..... BK2	EA	1
11	13	XD0ZZ		78998	1417	LOCK PLATE ..... BK2	EA	1
11	14	XD0ZZ		78998	1406	BOLT ..... BK2	EA	2
11	15	XD0ZZ		78998	1420	PIN WEIGHT BLOCK ..... BK2	EA	2
11	16	XD0ZZ		78998	1432	WEIGHT ..... BK2	EA	1
11	17	XD0ZZ		78998	1205	PIN ARM BRACKET ..... BK2	EA	2
11	18	XD0ZZ		78998	1208	BOLT TAG LINE ..... BK2	EA	2
11	19	XD0ZZ		78998	1506	BOLT TOOTH ..... BK2	EA	18
11	20	XD0ZZ		78998	1505	BOLT TOOTH ..... BK2	EA	18
11	21	XD0ZZ		78998	1504	BOLT TOOTH ..... BK2	EA	18
11	22	XDOZZ		78998	1003	TOOTH,BOTTOM ..... BK2	EA	6
11	23	XDOZZ		78998	1304	LIP ..... BK2	EA	1
11	24	XDOZZ		78998	1513	COUNTERWEIGHT JACKE ..... BK2	EA	1
11	25	XDOZZ		78998	1003	ARM OUTSIDE ..... BK2	EA	1
11	26	XDOZZ		78998	1404	PLATE,BLOCK ..... BK2	EA	3
11	27	XDOZZ		78998	1405	PLATE,BLOCK ..... BK2	EA	1

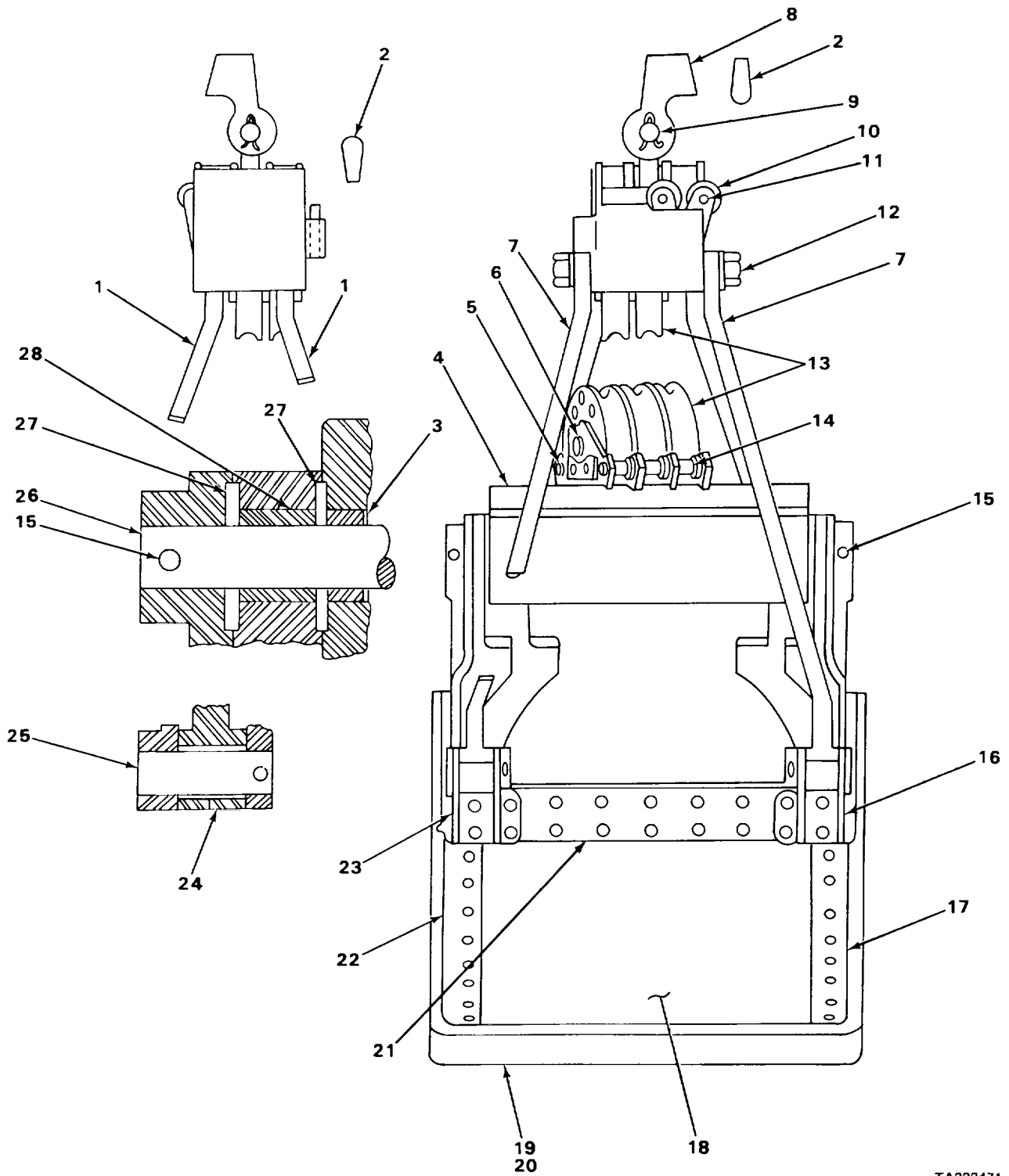


FIGURE 12. CLAMSHELL BUCKET, MODEL 2-75.

SECTION II

TM 5-3815-200-23P

(1) ILLUSTRATION		(2)	(3)	(4)	(5)	(6)	(7)	(8)
(a) FIG NO.	(b) ITEM NO.	SMR CODE	NATIONAL STOCK NUMBER	FSCM	PART NUMBER	DESCRIPTION  USABLE ON CODE	U/M	QTY INC IN UNIT
						7411(CONT)		
12	1	XD0ZZ		78998	11010	ARM LEFT SIDE..... BK3	EA	2
12	2	XD0ZZ		78998	33	WEDGECLOSING AND HOLDING..... BK3	EA	2
12	3	XD0ZZ		78998	10596	BUSHING-WEIGHT..... BK3	EA	2
12	4	XD0ZZ		78998	71740	WEIGHT..... BK3	EA	1
12	5	XD0ZZ		78998	1232	LOCK PLATE LOWER SHEAVE PIN..... BK3	EA	1
12	6	XD0ZZ		78998	1438	PIN LOWER SHEAVE..... BK3	EA	1
12	7	XD0ZZ		78998	11009	ARM OUTSIDE..... BK3	EA	2
12	8	XD0ZZ		78998	393	SOCKET HOLDING..... BK3	EA	1
12	9	XD0ZZ		78998	65	PIN YOKE..... BK3	EA	1
12	10	XD0ZZ		78998	823	ROLLER TOP..... BK3	EA	2
12	11	XD0ZZ		78998	220	PIN TOP ROLLER..... BK3	EA	2
12	12	XD0ZZ		78998	3119	PIN ARM HEAD..... BK3	EA	1
12	13	XD0ZZ		78998	125	SHEAVE CLOSING..... BK3	EA	5
12	14	XD0ZZ		78998	1066	SPOOL BLOCK..... BK3	EA	6
12	15	XD0ZZ		78998	607	PIN HINGE..... BK3	EA	1
12	16	XD0ZZ		78998	2217	BRACKET RIGHT ARM..... BK3	EA	2
12	17	XD0ZZ		78998	15401	PLATE RIGHT SIDE..... BK3	EA	2
12	18	XD0ZZ		78998	14803	PLATE BOTTOM..... BK3	EA	2
12	19	XD0ZZ		78998	220852-2	LIP..... BK3	EA	1
12	20	XD0ZZ		78998	220852-3	LIP..... BK3	EA	1
12	21	XD0ZZ		78998	11508	PLATE BACKSTRAP..... BK3	EA	2
12	22	XD0ZZ		78998	15402	PLATE LEFT SIDE..... BK3	EA	2
12	23	XD0ZZ		78998	2218	BRACKET LEFT ARM..... BK3	EA	2
12	24	XD0ZZ		78998	446	BUSHING ARM..... BK3	EA	4
12	25	XD0ZZ		78998	1931	PIN ARN,BRACKET..... BK3	EA	4
12	26	XD0ZZ		78998	3841	SHAFT,WEIGHT..... BK3	EA	1
12	27	XD0ZZ		78998	642	WASHER HINGE..... BK3	EA	4
12	28	XD0ZZ		78998	1890	BUSHING HINGE..... BK3	EA	2
<b>41/(42 blank)</b>								

SECTION II

TM 5-3815-200-23P

(1) ILLUSTRATION		(2)	(3)	(4)	(5)	(6)	(7)	(8)
(a) FIG NO.	(b) ITEM NO.	SMR CODE	NATIONAL STOCK NUMBER	FSCM	PART NUMBER	DESCRIPTION  USABLE ON CODE	U/M	QTY INC IN UNIT
BULK	1	PA0ZZ	4010-00-997-8432	81348	RRW410	GROUP 95-GENERAL USE STANDARDIZED PARTS GROUP 9501-BULK MATERIEL ROPE WIRE .....  <b>43/(44 blank)</b>	FT	V

## NATIONAL STOCK NUMBER AND PART NUMBER INDEX

NATIONAL STOCK NUMBER	FIGURE NO..	ITEM NO.	NATIONAL STOCK NUMBER	FIGURE NO.	ITEM NO.
3815-00-024-2238	5	15	5310-00-763-8921	1	16
4730-00-050-4208	2	22	5310-00-820-6653	1	41
3020-00-174-5515	5	9	4730-00-834-6189	1	50
5315-00-189-9595	1	15	5310-00-880-8186	1	20
3020-00-200-2029	6	10	5306-00-959-7820	1	18
3020-00-270-3530	5	23	5306-00-964-0963	1	40
5315-00-274-4297	6	3	4010-00-997-8432	BULK	1
5315-00-276-3635	7	17	3815-01-158-1759	2	7
5306-00-281-5593	6	7	3020-01-159-1010	2	24
5305-00-281-8222	5	22	4030-01-159-1566	2	4
5306-00-322-1022	6	18	4030-01-159-1566	9	8
5306-00-322-1022	6	18	5315-01-159-9437	2	6
3815-00-352-1649	5	13	5315-01-160-4643	2	10
5315-00-352-1833	5	3	5340-01-160-4675	2	5
3020-00-352-6147	1	43			
5315-00-352-6152	1	46			
5315-00-352-6156	1	14			
3120-00-352-6160	1	47			
3120-00-352-6161	1	24			
3120-00-352-6162	1	44			
5306-00-352-6166	1	33			
4030-00-354-3093	1	9			
3815-00-354-3435	7	14			
3815-00-354-3438	7	11			
4030-00-354-3441	7	2			
4030-00-354-3444	7	22			
3815-00-354-3446	7	19			
4030-00-354-3452	7	9			
5315-00-374-5496	6	4			
3815-00-374-5501	6	24			
3815-00-374-5503	6	11			
3815-00-374-5506	6	19			
5315-00-377-5308	5	14			
3815-00-377-6768	5	4			
3815-00-377-6770	5	5			
3815-00-377-6771	5	25			
3815-00-377-6774	5	10			
5306-00-377-6777	6	18			
3815-00-377-6779	5	18			
3815-00-377-6787	5	8			
3815-00-377-6789	6	14			
5306-00-426-2163	5	17			
3815-00-491-5158	9	12			
3815-00-505-5090	4	3			
3815-00-507-6275	1	34			
4030-00-530-4111	7	6			
3815-00-544-1062	6	6			
5306-00-572-8910	5	17			
5310-00-584-7888	1	17			
4030-00-603-4829	5	1			
3120-00-661-6649	5	21			
3120-00-661-6649	5	21			
3120-00-661-6649	5	21			
3120-00-662-1042	5	12			
4030-00-691-7975	7	1			
3815-00-691-9755	7	18			
3815-00-695-0584	5	7			
3815-00-707-8931	6	9			
5310-00-754-2005	1	21			
5310-00-763-8905	1	42			



## NATIONAL STOCK NUMBER AND PART NUMBER INDEX

FSCM	PART NUMBER	NATIONAL STOCK NUMBER	FIGURE NO.	ITEM NO.	FSCM	PART NUMBER	NATIONAL STOCK NUMBER	FIGURE NO.	ITEM NO.
78998	A-3010		8	34	26802	RC15068		6	1
20874	A-69336		9	6	46717	RC15334		5	16
46717	AH-7440	3815-00-374-5506	6	19	46717	RE15293L	3815-00-024-2238	5	15
46717	AH5202C		6	23	46717	RE3543C		5	24
46717	A7235	3815-00-352-1649	5	13	81348	RRW410	4010-00-997-8432	BULK	1
20874	B-69303		9	7	78998	T-289-G		8	25
20874	B-69327		9	3	78998	W-9		8	5
46717	BH4232		6	17	78998	WS-74A		8	11
46717	BH4235		6	17	20874	X02-1		1	49
46717	BH4291		5	15	20874	X02-11		1	45
46717	BH4291-1		6	16	20874	X02-12	3020-00-352-6147	1	43
46717	BH5325A	3815-00-377-6779	5	18	20874	X02-13		1	38
81076	B12569-2	4030-00-354-3093	1	9	20874	X02-14		1	23
46717	B4712	3020-00-174-5515	5	9	20874	X02-15		1	6
78998	C-14220		8	23	20874	X02-18		1	2
78998	CA694B		8	7	20874	X02-19		1	12
46717	C4712	3020-00-270-3530	5	23	20874	X02-2		1	25
20874	C69304		9	5	20874	X02-21	5315-00-352-6152	1	46
46717	D116A		6	12	20874	X02-22		1	3
46717	D117A		6	12	20874	X02-25	5315-00-352-6156	1	14
26802	HB1AX3793-2		5	1	20874	X02-26		1	7
26802	HB31AD170A		6	2	20874	X02-27		1	5
26802	HB40RA15412		5	6	20874	X02-3		1	37
78998	L-7		8	3	20874	X02-31	3120-00-352-6160	1	47
46717	L2254-30		6	8	20874	X02-32	3120-00-352-6161	1	24
20874	M-455-B		9	15	20874	X02-34	3120-00-352-6162	1	44
78998	M-495		8	9	20874	X02-36		1	26
78998	MK-44		8	25	20874	X02-37		1	27
78998	MKL-44		8	25	20874	X02-38		1	36
96906	MS15003-1	4730-00-050-4208	2	22	20874	X02-39		1	39
96906	MS24665-749	5315-00-189-9595	1	15	20874	X02-4		1	29
96906	MS24665-769		8	13	20874	X02-41		1	30
96906	MS24665-786		8	13	20874	X02-43	3815-00-507-6275	1	34
96906	MS24665-860		8	21	20874	X02-44	5306-00-352-6166	1	33
96906	MS35338-50	5310-00-820-6653	1	41	20874	X02-45		1	4
96906	MS35338-51	5310-00-584-7888	1	17	20874	X02-47		1	11
96906	M535338-52	5310-00-754-2005	1	21	20874	X02-48		1	32
96906	MS35355-163	5306-00-964-0963	1	40	20874	X02-49		1	31
96906	MS35355-207	5306-00-959-7820	1	18	20874	X02-5		1	35
96906	MS35355-234		1	22	20874	X02-50		1	19
96906	MS51967-20	5310-00-763-8905	1	42	20874	X02-52		1	13
96906	MS51967-23	5310-00-763-8921	1	16	20874	X02-58		1	10
96906	MS51967-26	5310-00-880-8186	1	20	20874	X02-8		1	8
46717	RA14185A	3815-00-377-6771	5	25	46717	X3493	5315-00-374-5496	6	4
46717	RA15153		5	11	46717	X3539	3815-00-544-1062	6	6
46717	RA15154		5	11	46717	X3850-2	5306-00-322-1022	6	18
46717	RA15219	5306-00-572-8910	5	17	46717	X3850-2	5306-00-322-1022	6	18
46717	RA15222		5	19	46717	X4496		6	15
93543	RA15609	3020-00-200-2029	6	10	46717	X4874		5	2
46717	RA3540	3815-00-707-8931	6	9	46717	X5268	3815-00-377-6787	5	8
46717	RA3643	3815-00-377-6768	5	4	46717	X5326	5306-00-426-2163	5	17
46717	RA3792A	3815-00-377-6774	5	10	46717	X7190-1		6	12
46717	RA4604	5315-00-377-5308	5	14	46717	X7190-2		6	12
46717	RA7141	5315-00-274-4297	6	3	46717	X7772	3815-00-377-6789	6	14
46717	RB-3760	3815-00-374-5503	6	11	46717	X8419-1		6	20
46717	RB15143		5	20	46717	X8419-2		6	20
46717	RB15144		5	20	46717	X8419-3		6	20
46717	RB15145		5	20	81615	Y101H		7	23
93543	RB3541-1	3815-00-374-5501	6	24	81615	Y101S		7	3
46717	RC15066	4030-00-603-4829	5	1	81615	Y15P	5315-00-276-3635	7	17

## NATIONAL STOCK NUMBER AND PART NUMBER INDEX

FSCM	PART NUMBER	NATIONAL STOCK NUMBER	FIGURE NO.	ITEM NO.	FSCM	PART NUMBER	NATIONAL STOCK NUMBER	FIGURE NO.	ITEM NO.
81615	Y161A	3815-00-354-3435	7	14	78998	1205		11	17
81615	Y201		7	5	78998	1208		11	18
81615	Y25		7	17	78998	1232		12	5
81615	Y251		7	10	78998	125		12	13
81615	Y251W	4030-00-530-4111	7	6	78998	1301		10	17
81615	Y300P		7	12	78998	1302		10	16
81615	Y351	4030-00-691-7975	7	1	78998	1304		10	22
81615	Y351W	4030-00-354-3441	7	2	78998	1304		11	23
81615	Y401		7	13	78998	1306		10	23
81615	Y411		7	21	78998	1307		10	15
81615	Y450	4030-00-354-3444	7	22	20874	13079		9	4
81615	Y5		7	16	78998	137709		8	17
81615	Y500	3815-00-354-3446	7	19	78998	137710L		8	2
81615	Y54		7	15	78998	137710R		8	2
81615	Y64		7	8	78998	1404		11	26
81615	Y74	4030-00-354-3452	7	9	78998	1405		11	27
46717	04533		5	11	78998	1406		11	14
78998	1001		10	1	78998	1410		10	28
78998	1002		10	2	78998	1412		10	30
78998	1003		10	9	78998	1413		10	21
78998	1003		11	25	78998	1414		10	19
78998	1009		10	25	78998	1415		10	18
78998	10290		8	27	78998	1416		10	20
78998	10596		12	3	78998	1417		11	13
78998	1066		12	14	78998	1418		10	13
78998	11009		12	7	78998	1419		11	12
78998	11010		12	1	78998	1420		11	15
78998	1108		11	8	78998	1421		10	27
78998	1115		11	7	78998	1422		10	11
78998	1116		10	8	78998	1427		10	12
78998	1117		11	9	78998	1428		10	29
78998	1119		11	6	78998	1432		11	16
78998	1120		11	1	78998	1438		12	6
78998	1121		10	7	78998	14803		12	18
78998	1121		11	3	78998	1503		11	22
78998	1123		11	10	78998	1504		11	21
78998	1124		10	5	78998	1505		11	20
78998	1125		11	2	88902	15058		3	40
78998	1126		10	6	88902	15059		3	41
78998	1126		11	4	78998	1506		11	19
78998	1129		10	10	88902	15060		3	38
78998	1129		11	11	88902	15061		3	24
78998	1131		10	4	88902	15062		3	13
63686	1132	4730-00-834-6189	1	50	88902	15063		3	4
78998	1133		10	3	88902	15064		3	6
78998	1135		11	5	88902	15065		3	8
20874	11402		2	2	88902	15066		3	2
20874	11443		9	11	88902	15067		3	35
78998	11508		12	21	88902	15068		3	5
20874	11517	5340-01-160-4675	2	5	88902	15069		3	7
20874	11519		9	18	88902	15070		3	39
20874	11520		9	9	88902	15071		3	1
20874	11697		2	19	88902	15072		3	33
20874	11942	4030-01-159-1566	2	4	88902	15073		3	34
20874	11942	4030-01-159-1566	9	8	88902	15081		3	12
20874	11943		9	19	88902	15085		4	1
20874	11955		2	15	88902	15087		4	4
78998	1201		10	24	88902	15091		4	8
78998	1202		10	14	88902	15093		3	28
78998	1205		10	26	88902	15098		3	22

## NATIONAL STOCK NUMBER AND PART NUMBER INDEX

FSCM	PART NUMBER	NATIONAL STOCK NUMBER	FIGURE NO.	ITEM NO.	FSCM	PART NUMBER	NATIONAL STOCK NUMBER	FIGURE NO.	ITEM NO.
78998	1513		11	24	78998	3119		12	12
20874	15158		2	20	78998	31424		8	8
20874	15179		2	12	78998	33		12	2
20874	15219		2	3	78998	33738		8	4
20874	15221	5315-01-159-9437	2	6	46717	3504		6	5
20874	15223		2	11	46717	3641	5315-00-352-1833	5	3
20874	15224		2	1	46717	3645	3815-00-377-6770	5	5
20874	15225		2	26	78998	36772		8	25
20874	15226		2	23	78998	3841		12	26
20874	15227		2	14	78998	393		12	8
20874	15229		2	17	78998	43030		8	28
20874	15265		2	9	78998	446		12	24
20874	15284		2	13	78998	51123		8	12
20874	15321		2	25	78998	51223		8	14
78998	15401		12	17	46717	5224	5306-00-377-6777	6	18
78998	15402		12	22	20874	56060		9	16
20874	15432		9	17	20874	56063		9	2
20874	15441		2	8	24076	57		4	7
20874	15467		2	16	46717	5871	3120-00-661-6649	5	21
84092	174133	3815-00-691-9755	7	18	46717	5871	3120-00-661-6649	5	21
84092	174357	3815-00-354-3438	7	11	46717	5871	3120-00-661-6649	5	21
78998	1890		12	28	46717	5872		6	21
20874	19190		2	18	46717	5872		6	21
78998	1931		12	25	46717	5872		6	21
20874	19508	5315-01-160-4643	2	10	46717	5888		6	13
20874	19969	3020-01-159-1010	2	24	78998	607		12	15
78998	20246		8	1	78998	61820		8	15
20874	20752		2	21	78998	61920		8	30
20874	20805		9	10	78998	642		12	27
20874	20807		9	1	78998	64741		8	19
20874	20808		9	14	78998	65		12	9
20874	20809		9	13	46717	6666		5	22
78998	21165		8	10	46717	6667	3815-00-695-0584	5	7
78998	220		12	11	46717	6669		5	22
78998	220852-2		12	19	46717	6670	5305-00-281-8222	5	22
78998	220852-3		12	20	70945	672-1		3	23
78998	2217		12	16	70945	672-10		3	15
78998	2218		12	23	70945	672-11		3	14
20874	23		1	48	70945	672-3		3	3
78998	2307		8	27	70945	672-36		3	11
20874	23954	3815-01-158-1759	2	7	70945	672-37		3	32
20874	24		1	28	70945	672-40		3	16
78998	242101R		8	33	70945	672-41		3	21
78998	242102L		8	33	70945	672-42		3	18
78998	243503		8	22	70945	672-43		3	17
78998	243552		8	24	70945	672-44		3	19
46717	2516	3120-00-662-1042	5	12	70945	672-46		3	20
78998	25275		8	16	70945	672-50	3815-00-505-5090	4	3
19207	2699299-180		7	7	70945	672-51		4	2
78998	273964		8	25	70945	672-53		4	6
20874	28		1	1	70945	672-55		4	9
78998	280238		8	25	70945	672-551		4	5
78998	29531		8	1	70945	672-70		3	26
78998	2976		8	7	70945	672-72		3	30
81615	3-4X3-1-2		7	20	70945	672-73		3	29
46717	3-4X9		6	22	70945	672-74		3	27
78998	30313		8	20	70945	672-77		3	31
78998	30314		8	26	70945	672-8		3	36
78998	30315		8	31	70945	672-9		3	25
78998	30316		8	32	70945	672-90		3	10

## NATIONAL STOCK NUMBER AND PART NUMBER INDEX

FSCM	PART NUMBER	NATIONAL STOCK NUMBER	FIGURE NO	ITEM NO.
70945	672-91		3	9
70945	672-92		3	37
81615	7-8X4-1-2		7	4
78998	71740		12	4
78998	76819		8	16
54658	78998		8	6
46717	7941	5306-00-281-5593	6	7
78998	823		12	10
78998	83840		8	18
78998	83840		8	29
20874	88853	3815-00-491-5158	9	12

By Order of the Secretaries of the Army and the Air Force:

JOHN A. WICKHAM, JR.  
*General, United States Army*  
*Chief of Staff*

Official:

DONALD J. DELANDRO  
*Brigadier General, United States Army*  
*The Adjutant General*

Official:

CHARLES A. GABRIEL, *General, USAF*  
*Chief of Staff*

EARL T. O'LAUGHLIN  
*General, USAF, Commander, Air Force*  
*Logistics Command*

Distribution:

To be distributed in accordance with DA Form 12-25B, Organizational, Direct and General Support Maintenance requirements for Crane, Shovel, Crawler, 10-20 Ton.

☆ U.S. GOVERNMENT PRINTING OFFICE: 1985-554-019/20008

RECOMMENDED CHANGES TO EQUIPMENT TECHNICAL PUBLICATIONS



THEN . . . JOT DOWN THE DOPE ABOUT IT ON THIS FORM, CAREFULLY TEAR IT OUT, FOLD IT AND DROP IT IN THE MAIL!

**SOMETHING WRONG WITH THIS PUBLICATION?**

FROM: (PRINT YOUR UNIT'S COMPLETE ADDRESS)

DATE SENT

PUBLICATION NUMBER

TM 11-5825-270-10

PUBLICATION DATE

23 Jul 81

PUBLICATION TITLE

Radio Frequency R-2176/FRN

BE EXACT . . . PIN-POINT WHERE IT IS

PAGE NO.	PARA-GRAPH	FIGURE NO.	TABLE NO.

IN THIS SPACE TELL WHAT IS WRONG AND WHAT SHOULD BE DONE ABOUT IT:

TEAR ALONG PERFORATED LINE

PRINTED NAME, GRADE OR TITLE, AND TELEPHONE NUMBER

SIGN HERE:

DA FORM 2028-2  
1 JUL 79

PREVIOUS EDITIONS ARE OBSOLETE.

P.S.—IF YOUR OUTFIT WANTS TO KNOW ABOUT YOUR RECOMMENDATION MAKE A CARBON COPY OF THIS AND GIVE IT TO YOUR HEADQUARTERS.

# THE METRIC SYSTEM AND EQUIVALENTS

## WEIGHT MEASURE

1 Centimeter = 10 Millimeters = 0.01 Meters = 0.3937 Inches  
 1 Meter = 100 Centimeters = 1000 Millimeters = 39.37 Inches  
 1 Kilometer = 1000 Meters = 0.621 Miles

## WEIGHTS

1 Gram = 0.001 Kilograms = 1000 Milligrams = 0.035 Ounces  
 1 Kilogram = 1000 Grams = 2.2 lb.  
 1 Metric Ton = 1000 Kilograms = 1 Megagram = 1.1 Short Tons

## LIQUID MEASURE

1 Milliliter = 0.001 Liters = 0.0338 Fluid Ounces  
 1 Liter = 1000 Milliliters = 33.82 Fluid Ounces

## SQUARE MEASURE

1 Sq. Centimeter = 100 Sq. Millimeters = 0.155 Sq. Inches  
 1 Sq. Meter = 10,000 Sq. Centimeters = 10.76 Sq. Feet  
 1 Sq. Kilometer = 1,000,000 Sq. Meters = 0.386 Sq. Miles

## CUBIC MEASURE

1 Cu. Centimeter = 1000 Cu. Millimeters = 0.06 Cu. Inches  
 1 Cu. Meter = 1,000,000 Cu. Centimeters = 35.31 Cu. Feet

## TEMPERATURE

$5/9(^{\circ}\text{F} - 32) = ^{\circ}\text{C}$   
 212° Fahrenheit is equivalent to 100° Celsius  
 90° Fahrenheit is equivalent to 32.2° Celsius  
 32° Fahrenheit is equivalent to 0° Celsius  
 $9/5^{\circ}\text{C} + 32 = ^{\circ}\text{F}$

## APPROXIMATE CONVERSION FACTORS

TO CHANGE	TO	MULTIPLY BY
Inches	Centimeters	2.540
Feet	Meters	0.305
Yards	Meters	0.914
Miles	Kilometers	1.609
Square Inches	Square Centimeters	6.451
Square Feet	Square Meters	0.093
Square Yards	Square Meters	0.836
Square Miles	Square Kilometers	2.590
Acres	Square Hectometers	0.405
Cubic Feet	Cubic Meters	0.028
Cubic Yards	Cubic Meters	0.765
Fluid Ounces	Milliliters	29.573
its	Liters	0.473
arts	Liters	0.946
allons	Liters	3.785
Ounces	Grams	28.349
Pounds	Kilograms	0.454
Short Tons	Metric Tons	0.907
Pound-Feet	Newton-Meters	1.356
Pounds per Square Inch	Kilopascals	6.895
Miles per Gallon	Kilometers per Liter	0.425
Miles per Hour	Kilometers per Hour	1.609

TO CHANGE	TO	MULTIPLY BY
Centimeters	Inches	0.394
Meters	Feet	3.280
Meters	Yards	1.094
Kilometers	Miles	0.621
Square Centimeters	Square Inches	0.155
Square Meters	Square Feet	10.764
Square Meters	Square Yards	1.196
Square Kilometers	Square Miles	0.386
Square Hectometers	Acres	2.471
Cubic Meters	Cubic Feet	35.315
Cubic Meters	Cubic Yards	1.308
Milliliters	Fluid Ounces	0.034
Liters	Pints	2.113
Liters	Quarts	1.057
ers	Gallons	0.264
ms	Ounces	0.035
ograms	Pounds	2.205
Metric Tons	Short Tons	1.102
Newton-Meters	Pounds-Feet	0.738
Kilopascals	Pounds per Square Inch	0.145
ometers per Liter	Miles per Gallon	2.354
ometers per Hour	Miles per Hour	0.621



**PIN: 056788-000**